

TECHNICAL BULLETIN

To: Architects, Builders, Regulatory Bodies
The Building Agency Technical Team
The Building Agency Sales Team
The Building Agency Approved Applicators

From: Product Development Manager – Technical

Number: SR2:2024

Topic: Siderise RH “Screw Fixing Small Voids”

Application: Siderise RH ‘Open State’ horizontal cavity barriers have been specifically developed to meet the requirements for cavity barriers used in drained and ventilated façades. Their use ensures that the system will drain any moisture within the façade construction whilst maintaining airflow and, in the event of fire, provide an effective fire seal.

Siderise has developed two ‘Open State’ (open void) horizontal solutions: RH25 for air gaps up to 25mm and RH50 for air gaps up to 50mm.

Frequent questions:

Q: When is Screw Fixing Appropriate?

A: Anywhere when the RH product width is less than 50mm.

Q: Where do you install the Screw Fixing?

A: For RH25 barrier, centre of the intumescent strip.

A: For RH25 strip only, centre of the Intumscent strip

A: For RH50 Strip only, centre of the Intumscent strip

A: For RH50 barrier, top of the Intumscent strip.

Key Points

- The black intumescent strip which is the front portion of the Siderise RH should always face away from the building membrane.
- In no instance should the black intumescent strip which is the front portion of the Siderise RH barrier be taped with Siderise RFT120.
- Foil tape should only be used on top of the barrier to join adjacent RH barrier together at butt joints, corners, and junction into Siderise RV.
- Once the barrier has been fixed into the correct location, the fixings should not be moved. If any positional changes are to be completed, a new piece of Siderise cavity barrier must be installed to ensure the integrity of the fire stopping system.
- Any additional fastener can be introduced per a site submittal to The Building Agency for Siderise to review. Any design changes can be linked to the project file via the Siderise App. These changes will be included in their installation review www.siderise.com/services/inspection-app

Minimum RH installation length is 100mm, two stainless fixings with washers required (supplied by others).

1. 101-200mm RH barrier lengths
 - a. Two fixings required per RH barrier.
 - b. minimum edge distance 25mm,
 - c. minimum gap between fasteners 50mm
2. 201-800mm RH barrier lengths
 - a. Two fixings required per RH barrier.
 - b. minimum edge distance 50mm, maximum edge distance 200mm
 - c. maximum gap between fasteners 400mm
 - d. fasteners should be equally spaced as possible (tolerance +/-25mm).
 - e. minimum 50mm edges distances from interruptions
3. 801-1200mm RH barrier lengths
 - a. Three fixings required per RH pack
 - b. minimum edge distance 50mm, maximum edge distance 200mm
 - c. maximum gap between fasteners 400mm
 - d. fasteners should be equally spaced as possible (tolerance +/-25mm).
 - e. minimum 50mm edges distances from interruptions

RV-RH Quick Guide to Installation for Small Voids scan the link below

SCAN / CLICK HERE FOR



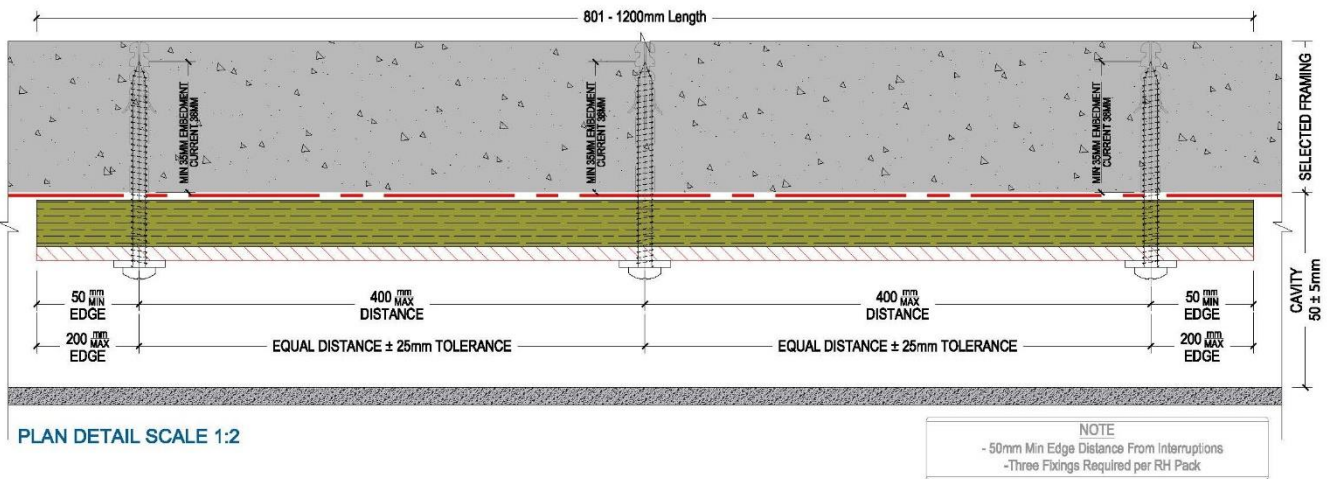
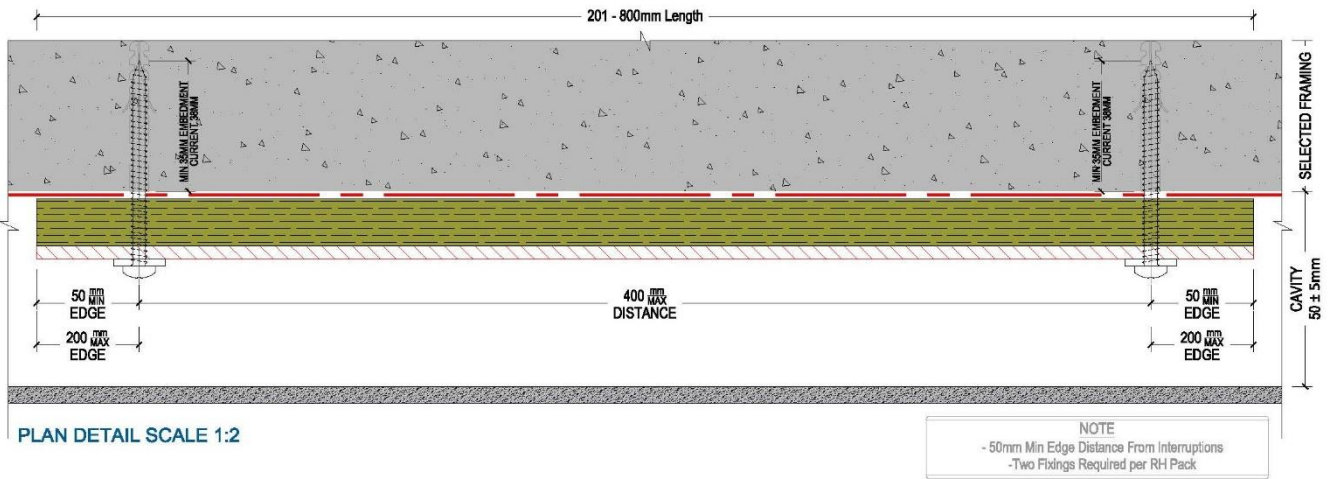
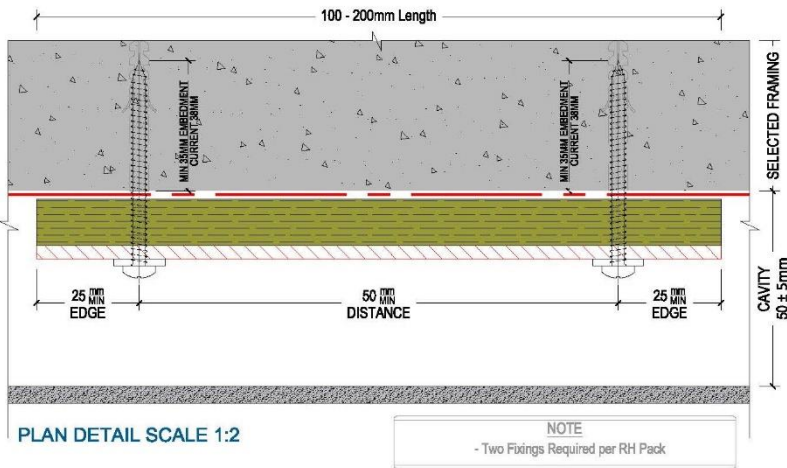
FURTHER INSTRUCTIONS

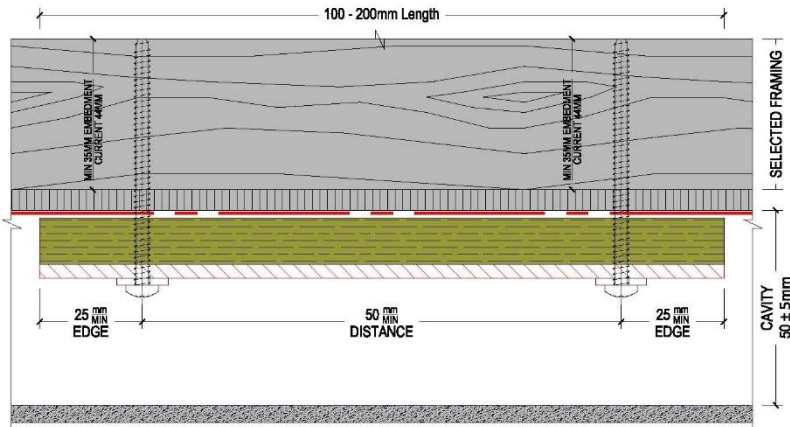
Reference

- www.siderise.com/products/facades/open-state-cavity-barriers
- www.thebuildingagency.co.nz/all-products/siderise/
- www.thebuildingagency.co.nz/wp-content/uploads/2022/06/SIDERISE_RHRV_4.2_NC_Web.pdf

Document reviewed by Siderise Insulation Technical Engineers (located in Dubai) www.siderise.com

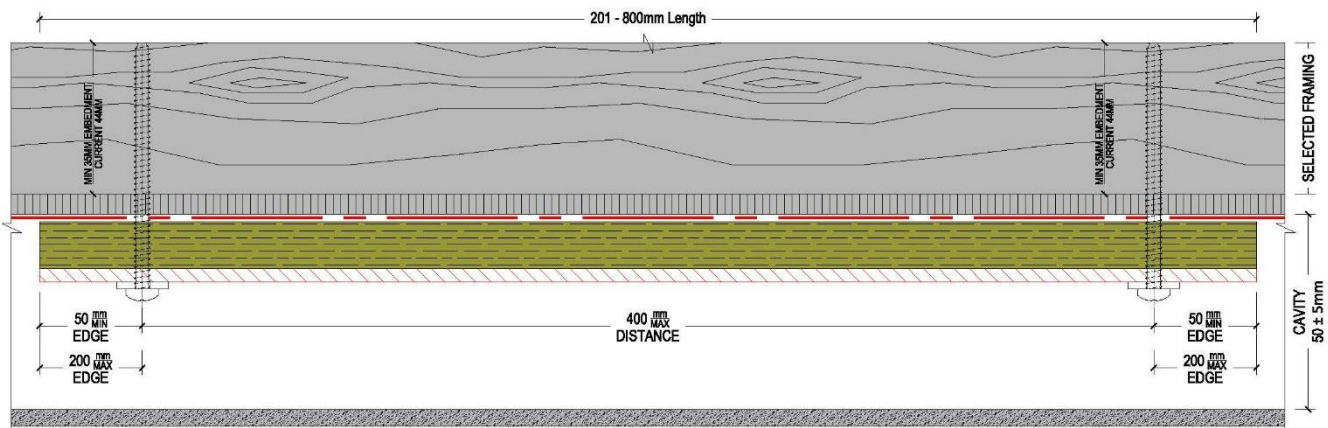
(uncontrolled in printed format)





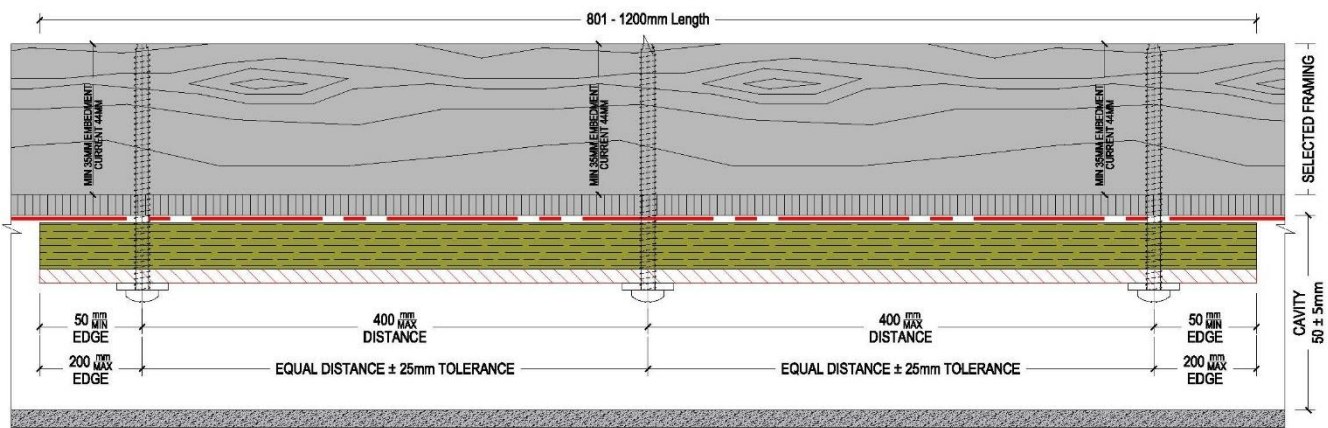
PLAN DETAIL SCALE 1:2

NOTE
- Two Fixings Required per RH Pack



PLAN DETAIL SCALE 1:2

NOTE
- 50mm Min Edge Distance From Interruptions
- Two Fixings Required per RH Pack



PLAN DETAIL SCALE 1:2

NOTE
- 50mm Min Edge Distance From Interruptions
- Three Fixings Required per RH Pack