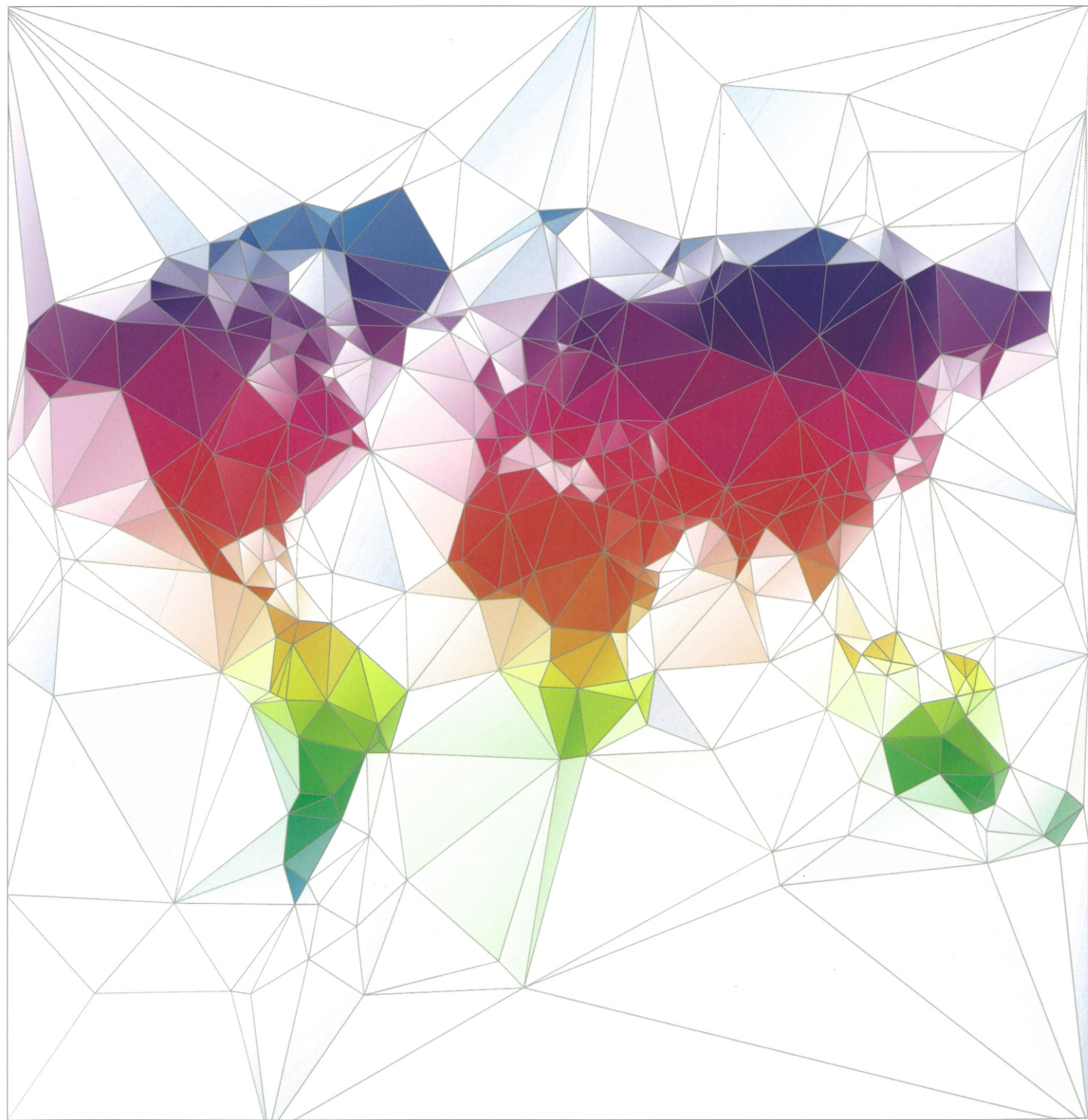


# ALUCOLUX<sup>®</sup>

## WORLD OF COLOURS

Outstanding quality colours and surfaces



# ADD SOME SPICE

These colors have truly earned unwavering admiration with their unrivalled versatility and remarkable dependability in a diverse array of settings. With an impressive range of vibrant, metallic and solid options at your fingertips, these hues form the bedrock of any successful color scheme.

Vibrant colors can be used to craft a unique appearance that evokes a range of emotions and reactions. Imagine the daring and audacious effect of Lemon, the electrifying and vibrant display of Red, or the mesmerizing and enchanting allure of Intense Blue. In contrast, metallic colors offer a tantalizing array of captivating visual effects that transform under varying

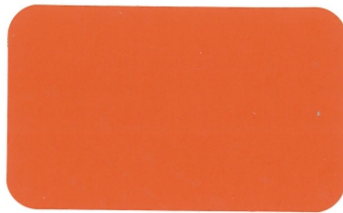
lighting conditions and viewing angles, elevating your building to new heights of brilliance and radiance. Solid colors exude a refined and subtle elegance, imbuing your building with a sense of timelessness and sophistication.

These options have been rigorously tested and proven to be a resounding success, leaving a lasting impression on both users and passers-by alike. Rest assured that whether you opt for vibrant, metallic or solid colors, you can bask in the confidence that these colors will leave a significant impact on your building's appearance.

## VIBRANT COLOURS



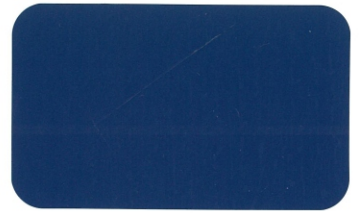
Ruby | 8202



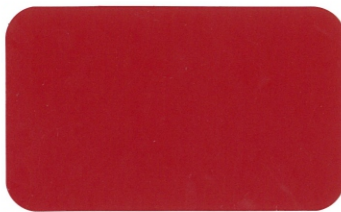
Orange | 8210



Emerald green | 691



Navy blue | 9336



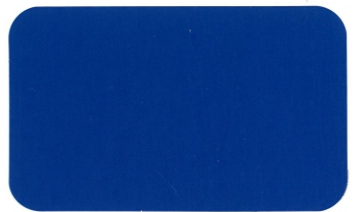
Red | 8201



Lemon | 8200



Lime | 8313



Intense blue | 3191

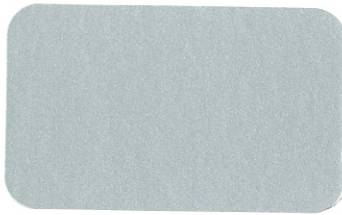
## METALLIC COLOURS



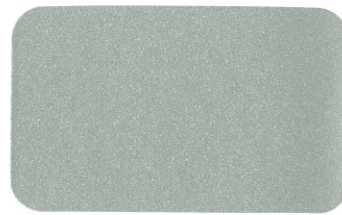
**Dark grey metallic | 505**



**Smoke silver metallic | 501**



**Silver metallic | 500**



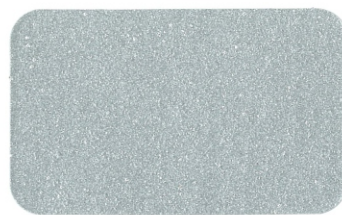
**Champagne metallic | 503**



**Grey metallic | 502**



**Grey blue metallic | 603**



**Sunrise silver metallic | 600**



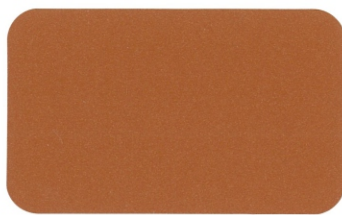
**Brilliant metallic | 602**



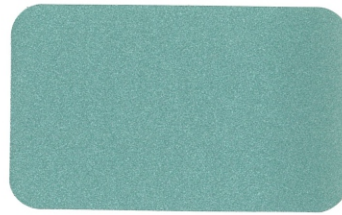
**Bronze metallic | 504**



**Daytona gold | 8703**



**Nevada copper | 8705**



**Jade green metallic | 9329**



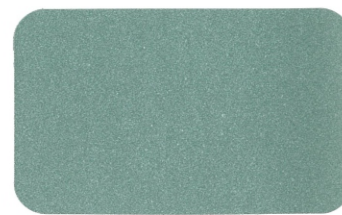
**Classic bronze metallic | 9604**



**Gold metallic | 601**

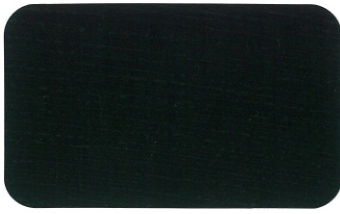


**Copper metallic | 8704**



**Seafoam green metallic | 604**

## SOLID COLOURS



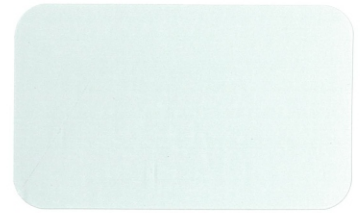
**Black** | 326



**Anthrazit grey** | 105



**Fashion grey** | 460



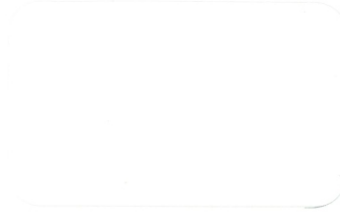
**Light grey** | 104



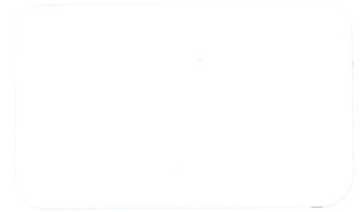
**Beige** | 103



**Cream** | 102



**Pure white 10** | 100



**White 16** | 101

### GENERAL INFORMATION

ALUCOLUX® features a multi-coat, multi-bake process on a continuous coil coating line using the highest grade of PVDF/FEVE paint system. The multiple layers are individually cured at temperatures of between 200-260 °C. The quality of the coating is tested according to standards established by E.C.C.A. (European Coil Coating Association) of which 3A Composites is a member. Fluorocarbon (PVDF) coating systems combine good formability and excellent surface durability. They are extremely resistant to weathering, strong solar radiation and pollution. The colour reproduction in this chart is subject to printing limitations. For exact colour matching, request actual colour samples.

The standard gloss for colours is between 30% - 40% according to Gardner Scale.

Minimum order quantities apply.  
For more information please refer to your nearest ALUCOLUX® representative or visit [www.alucolux.com](http://www.alucolux.com)

### ONLY FOR METALLIC COLOURS

To avoid possible reflection variations, it is recommended to install the panels in the same direction as marked on the protective peel-off-foil. Colour variations may occur between panels originating from different production batches. To ensure colour consistency, the total requirement for a project must be placed in one order.

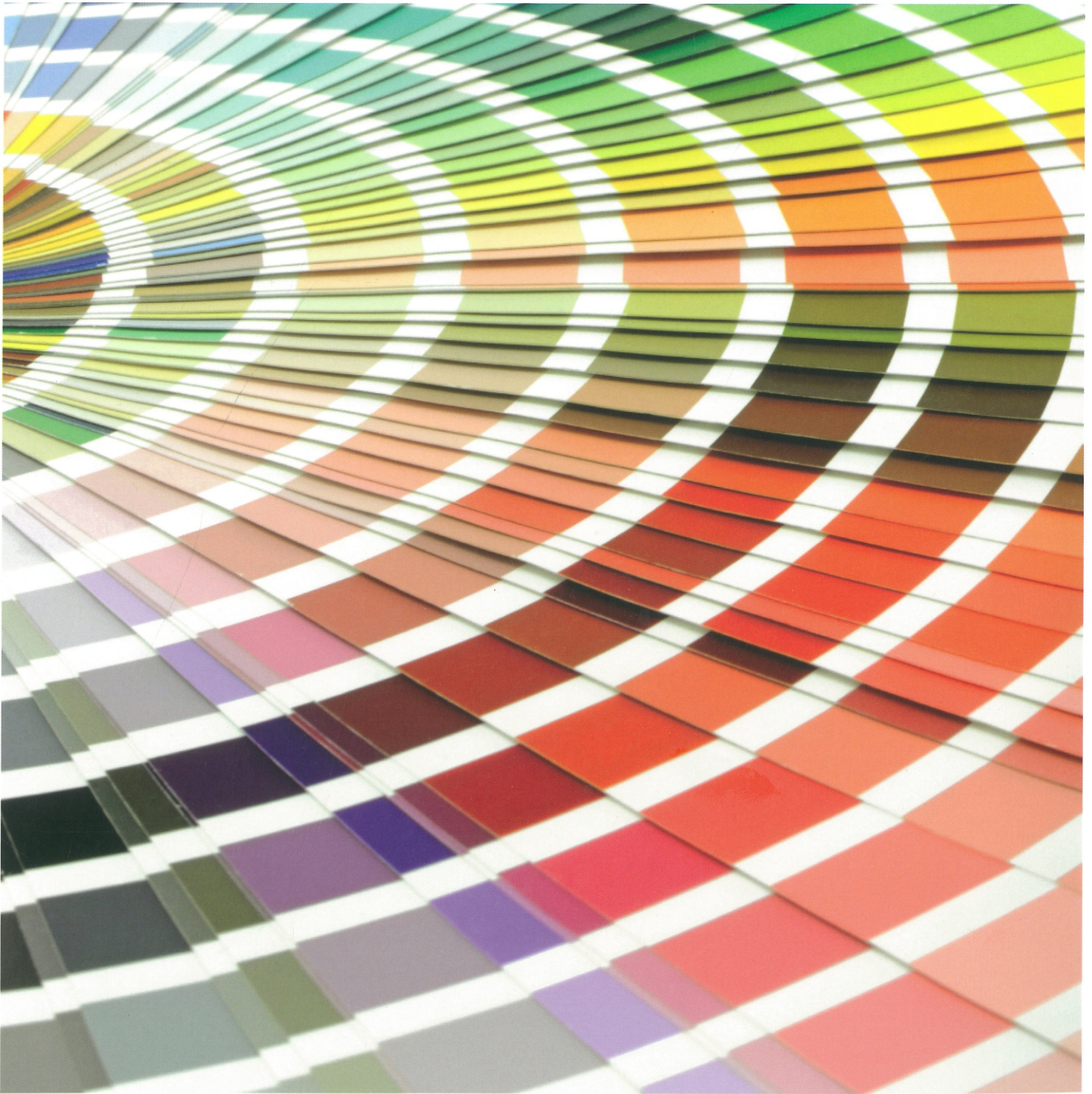
# WE'LL DO IT FOR YOU

Are you still searching for that elusive color that perfectly captures your vision? Look no further than our services. We take immense pride in our ability to match any color, even if it is not currently featured in our color charts.

Our ultimate goal is to bring your unique vision to life, and we will stop at nothing to make that a reality. Whether you're

seeking a bold and vibrant hue, or a subtle and nuanced shade, our team of experts will use their unmatched skill and expertise to match your precise specifications.

Trust us to bring your vision to life, and experience the unparalleled satisfaction that comes with seeing your vision come to fruition.



Your vision materialized.

**ALUCOLUX**

**ALUCOBOND (FAR EAST) PTE LTD**

6 Shenton Way #40-05  
OUE Downtown 1  
Singapore 068809  
Tel: (65) 6303 9750  
Fax: (65) 6303 9751  
Email: sales@alucobond.com.sg  
www.alucolux.com  
www.alucobond.com.sg

**3A COMPOSITES INDIA PVT. LTD.**

Bldg. No. 11, Unit No. 1112, 1st Floor  
Solitaire Corporate Park  
Mathuradas VasANJI Marg  
Andheri (East)  
Mumbai - 400 093, India  
Telephone: (91) 22 4256 4500  
Telefax: (91) 22 4010 4132  
Email: alucobond.india@3acomposites.com  
www.alucobond.in

**3A COMPOSITES GmbH**

Alusingenplatz 1  
D-78224 Singen,  
Germany  
Tel: (49) 0 7731 941 0  
Fax: (49) 0 7731 941 3510  
Email: info.eu@alucobond.com  
www.alucobond.com

**3A COMPOSITES MIDDLE EAST (BRANCH)**

Almas Tower, JLT  
P.O. Box 340 505, Dubai  
U.A.E  
Mob: (971) 50 5574676  
Email: markus.setz@3AComposites.com  
www.alucobond.com

**3A COMPOSITES (JIANGSU) LTD.**

10 South Hehuan Road  
Zhonglou, Changzhou 213023,  
China  
Tel: (86) 519 8166 5766  
Fax: (86) 519 8166 5999  
Email: info.china@alucobond.com  
www.alucobond.com.cn

**3A COMPOSITES USA, Inc.**

3480 Taylorsville Highway,  
Statesville, N.C.28625  
U.S.A  
Tel: (1) 704 872-8974  
Fax: (1) 704 878-2708  
Email: info.usa@3AComposites.com  
www.alucobondusa.com

