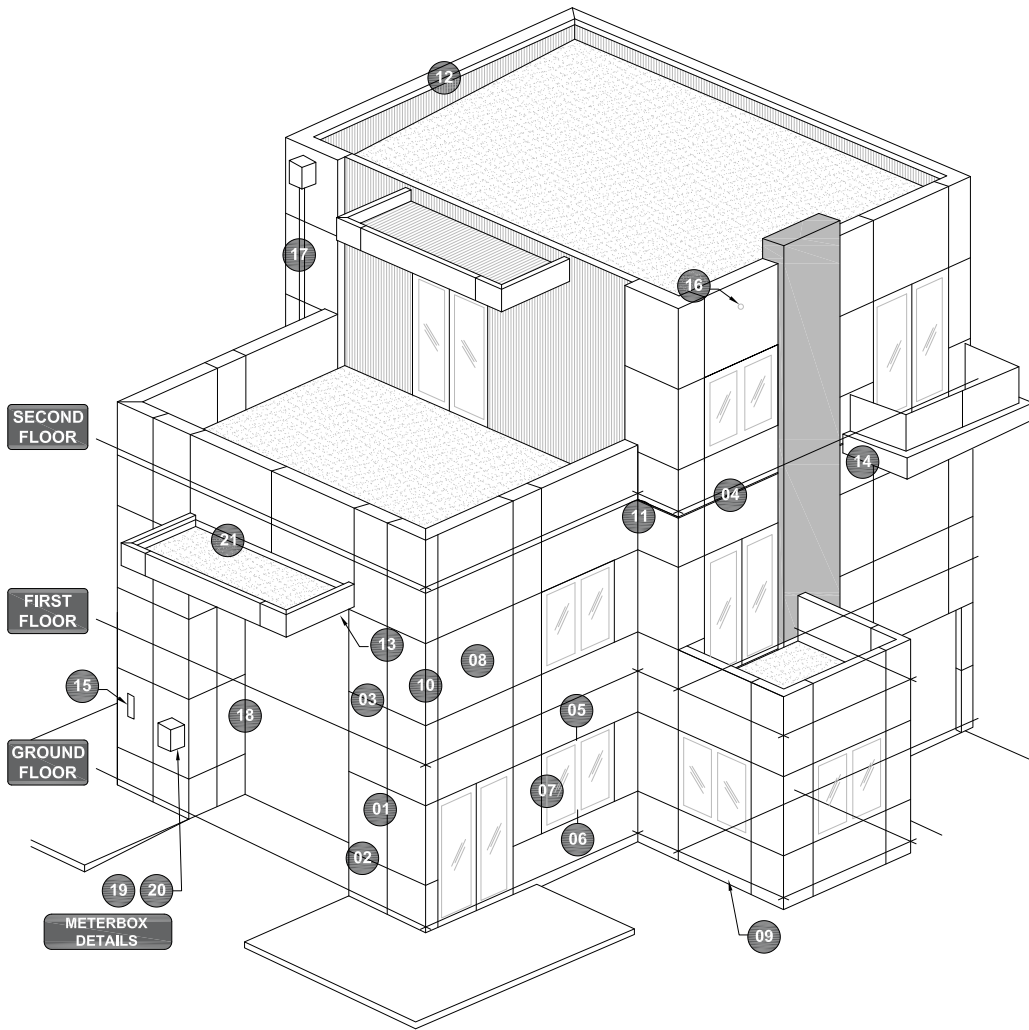


Equitone - T50 - Visible Rivet Fixed



DETAILS INDEX

01	STANDARD VERTICAL JOINT DETAIL
02	STANDARD HORIZONTAL JOINT DETAIL 1
03	STANDARD HORIZONTAL JOINT DETAIL 2
04	INTERSTOREY HORIZONTAL JOINT DETAIL
05	RESIDENTIAL WINDOW HEAD DETAIL
06	RESIDENTIAL WINDOW SILL DETAIL
07	RESIDENTIAL WINDOW JAMB DETAIL
08	STANDARD INTERMEDIA SUPPORT DETAIL
09	BACE CLEARANCE DETAIL
10	EXTERNAL CORNER DETAIL
11	INTERNAL CORNER DETAIL
12	PARAPET DETAIL
13	WALL AND SOFFIT DETAIL
14	WALL / FASCIA AND SOFFITE DETAIL
15	STANDARD PENETRATION DETAIL
16	STANDARD PIPE PENETRATION DETAIL
17	DOWNPIPE FIXING DETAIL
18	VERTICAL CONNECTION TO THE WALL/ ELEM.
19	METERBOX HEAD AND SILL DETAIL
20	JAMB METREBOX CONNECTION DETAIL
21	WALL TO METAL ROOF DETAIL

SPS BUILDING

ROOFING & BUILDING PRODUCTS

SPS Roofing and Building Limited
220B Bush Road, Rosedale, Auckland, New Zealand,
T : +64 9 415 2669 | www.spsbuilding.co.nz

Sheet Title:

Diagrammatic Detail Index
Equitone High Density Fibre Cement
T 50 Typical Details

Sheet Status:

Architectural Resource
For Information & Design

Sheet Number:

00

Revision:

A

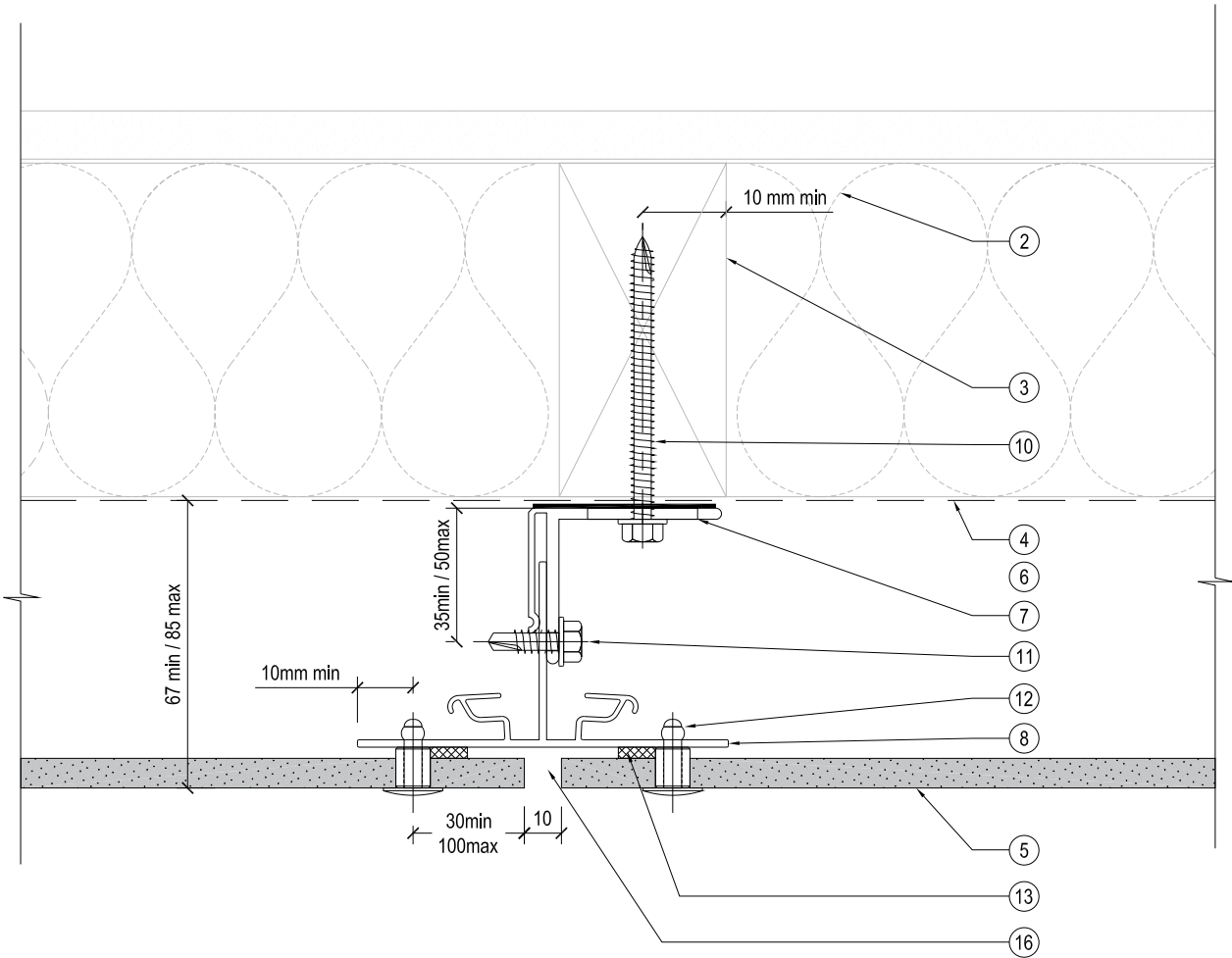
Revision Date

July 2019

Scale @ A4:

1:2

Equitone - T50 - Visible Rivet Fixed



NOTES / SPECIFICATION:

- | | | | | | |
|--|--|--|--|---|--|
| <p>1. DRAINAGE AND VENTILATION SLOT
BY OTHERS</p> <p>2. INSULATION IF REQUIRED, BY OTHERS</p> <p>3. FRAMING TO NZS3604, BY OTHERS</p> <p>4. AIR BARRIER (RIGID OR FLEXIBLE WALL UNDERLAY), BY OTHERS</p> <p>5. EQUITONE 8MM THICK FIBRE CEMENT PANEL, BY PANEL FABRICATOR</p> <p>6. DRAINAGE AND VENTILATED CAVITY</p> | <p>7. T50BR AL. MILL FINISH CLADDING SUPPORT BRACKET-OVER BUTYL PAD (MIN 2 PER RAIL, SPACED @ 800mm CRS MAX), BY PANEL FABRICATOR</p> <p>8. T50VR AL. BLACK PC VERTICAL SUPPORT RAIL (SPACED @ 600mm CRS MAX), BY PANEL FABRICATOR</p> <p>9. T50R AL. MILL FINISH VERTICAL INTERMEDIATE SUPPORT RAIL (SPACED @ 600mm CRS MAX), BY PANEL FABRICATOR</p> | <p>10. SS304(A2) HEX TEK T17 TIP SCREW 14g x 75 mm, BY PANEL FABRICATOR</p> <p>11. SS304(A2) HEX TEK SDS TIP SCREW 14g x 25 mm, BY PANEL FABRICATOR</p> <p>12. PROPRIETARY SS304(A2) 4.8 mm RIVET PC OR SS FINISH (MIN 2 PER SHEET, SPACED @ 600mm CRS MAX), BY PANEL FABRICATOR</p> <p>13. PROPRIETARY BLACK PVC FOAM TAPE 60mm, CONTINUOUS VERTICAL, BY PANEL FABRICATOR</p> | <p>14. CORNER CLIP PROFILE, FIXED WITH SS304(A2) ST PAN 6g x 12mm (min 2 PER RAIL), BY PANEL FABRICATOR</p> <p>15. ALU/ALU, No. 4 CSK POP-RIVET (min 2 PER RAIL, SPACED @ 600mm CRS MAX), BY PANEL FABRICATOR</p> <p>16. 10mm NEGATIVE JOINT</p> <p>17. T50 HR HORIZONTAL FLASHING, BLACK PC FINISH, ADHESIVE FIXING TO TOP EDGE OF THE EQUITONE FIBRE CEMENT PANEL, BY PANEL FABRICATOR</p> | <p>18. STRUCTURAL TIMBER NOG TO NZS3604 PRIOR INSTALLATION, FIXED WITH MINIMUM 3 NAILS, BY OTHERS</p> <p>19. SCREW FIXING, BY PANEL FABRICATOR</p> <p>20. FIXING INTO TIMBER WITH SS304(A2) HEX TEK T17 TIP SCREW 10g x 35 mm @ 400 CRS max, BY PANEL FABRICATOR</p> <p>21. T50J AL JAMB CLOSURE PROFILE PC LSG MATT BLACK, CONTINUOUS VERTICAL TO WINDOW JAMB, BY PANEL FABRICATOR</p> | <p>22. BUTYL TAPE 50mm MIN COVER ON EACH SIDE, BY OTHERS</p> <p>23. FOLDED METAL FLASHING TO SUIT, BY OTHERS</p> <p>24. CONTINUOUS FLASHING TAPE, 35mm MIN COVER ON THE FLASHING, BY PANEL FABRICATOR</p> <p>25. FLASHING TAPE DRESSED OVER, BY OTHERS</p> <p>26. FOLDED METAL FLASHING 60mm MIN COVER ON EACH SIDE, BY OTHERS</p> <p>27. SEALANT ON PE/ROD, BY PANEL FABRICATOR</p> |
|--|--|--|--|---|--|

SPS BUILDING
ROOFING & BUILDING PRODUCTS

SPS Roofing and Building Limited
220B Bush Road, Rosedale, Auckland, New Zealand,
T: +64 9 415 2669 | www.spsbuilding.co.nz

Sheet Title:

Standard Vertical Joint
Equitone High Density Fibre Cement
T 50 Typical Details

Sheet Status:

Architectural Resource
For Information & Design

Sheet Number:

01

Revision:

A

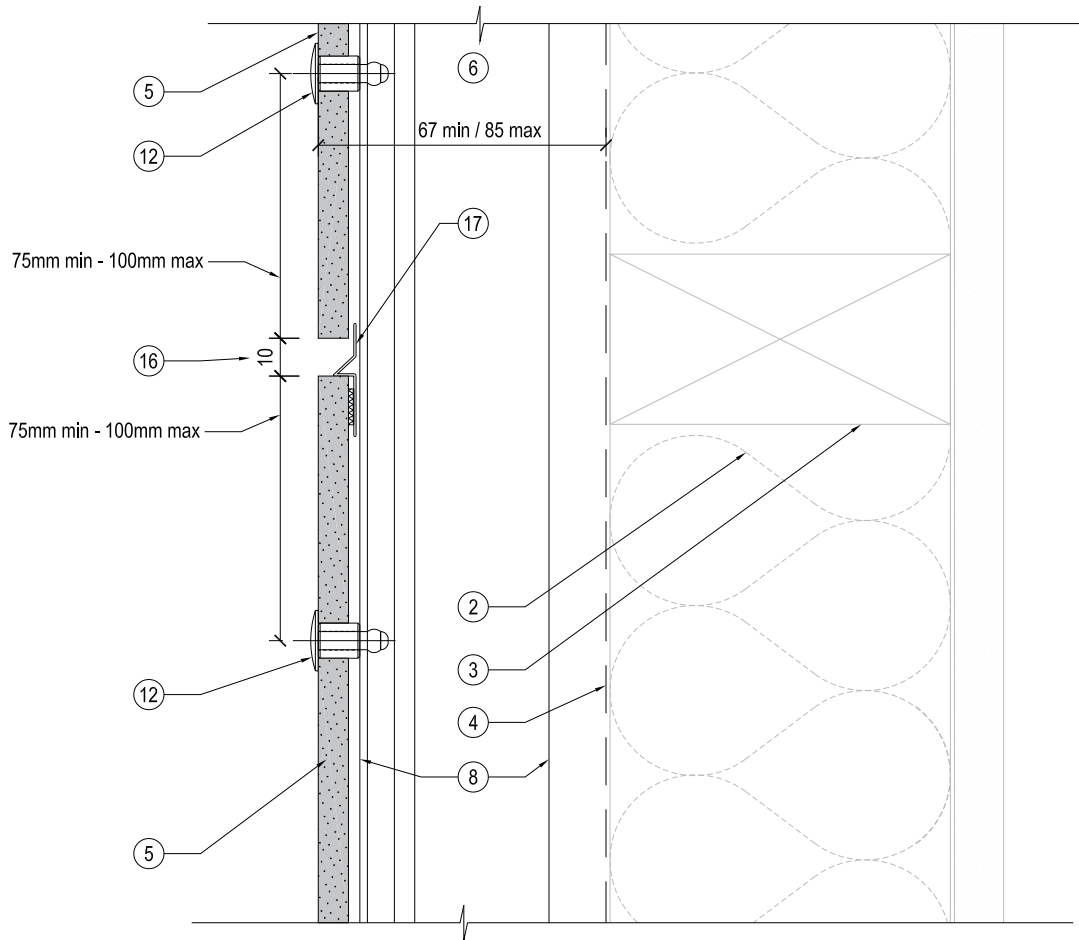
Revision Date

July 2019

Scale @ A4:

1:2

Equitone - T50 - Visible Rivet Fixed



NOTES / SPECIFICATION:

- | | | | | | |
|---|---|--|--|--|---|
| <p>1. DRAINAGE AND VENTILATION SLOT
BY OTHERS</p> <p>2. INSULATION IF REQUIRED, BY OTHERS</p> <p>3. FRAMING TO NZS3604, BY OTHERS</p> <p>4. AIR BARRIER (RIGID OR FLEXIBLE WALL UNDERLAY), BY OTHERS</p> <p>5. EQUITONE 8MM THICK FIBRE CEMENT PANEL, BY PANEL FABRICATOR</p> <p>6. DRAINED AND VENTILATED CAVITY</p> | <p>7. T50BR AL. MILL FINISH CLADDING SUPPORT BRACKET-COVER BUTYL PAD (MIN 2 PER RAIL, SPACED @ 800mm CRS MAX), BY PANEL FABRICATOR</p> <p>8. T50VR AL. BLACK PVC VERTICAL SUPPORT RAIL (SPACED @ 600mm CRS MAX), BY PANEL FABRICATOR</p> <p>9. T50IR AL. MILL FINISH VERTICAL INTERMEDIATE SUPPORT RAIL (SPACED @ 600mm CRS MAX), BY PANEL FABRICATOR</p> | <p>10. SS304(A2) HEX TEK T17 TIP SCREW 14g x 75 mm, BY PANEL FABRICATOR</p> <p>11. SS304(A2) HEX TEK SDS TIP SCREW 14g x 25 mm, BY PANEL FABRICATOR</p> <p>12. PROPRIETARY SS304(A2) 4.8 mm RIVET PC OR SS FINISH (MIN 2 PER SHEET, SPACED @ 600mm CRS MAX), BY PANEL FABRICATOR</p> <p>13. PROPRIETARY BLACK PVC FOAM TAPE 60mm, CONTINUOUS VERTICAL, BY PANEL FABRICATOR</p> | <p>14. CORNER CLIP PROFILE, FIXED WITH SS304(A2) ST PAN 6g x 12mm (min 2 PER RAIL), BY PANEL FABRICATOR</p> <p>15. ALU/ALU. Nb. 4 CSK POP-RIVET (min 2 PER RAIL, SPACED @ 600mm CRS MAX), BY PANEL FABRICATOR</p> <p>16. 10mm NEGATIVE JOINT</p> <p>17. T50 HR HORIZONTAL FLASHING, BLACK PC FINISH, ADHESIVE FIXING TO TOP EDGE OF THE EQUITONE FIBRE CEMENT PANEL, BY PANEL FABRICATOR</p> | <p>18. STRUCTURAL TIMBER NOG TO NZS3604 PRIOR INSTALLATION, FIXED WITH MINIMUM 3 NAILS, BY OTHERS</p> <p>19. SCREW FIXING, BY PANEL FABRICATOR</p> <p>20. FIXING INTO TIMBER WITH SS304(A2) HEX TEK T17 TIP SCREW 10g x 35 mm @ 400 CRS max, BY PANEL FABRICATOR</p> <p>21. T50J AL. JAMB CLOSURE PROFILE PC LSG MATT BLACK, CONTINUOUS VERTICAL TO WINDOW JAMB, BY PANEL FABRICATOR</p> | <p>22. BUTYL TAPE 50mm MIN COVER ON EACH SIDE, BY OTHERS</p> <p>23. FOLDED METAL FLASHING TO SUIT, BY OTHERS</p> <p>24. CONTINUOUS FLASHING TAPE, 35mm MIN COVER ON THE FLASHING, BY PANEL FABRICATOR</p> <p>25. FLASHING TAPE DRESSED OVER, BY OTHERS</p> <p>26. FOLDED METAL FLASHING 60mm MIN COVER ON EACH SIDE, BY OTHERS</p> <p>27. SEALANT ON PEF ROD, BY PANEL FABRICATOR</p> |
|---|---|--|--|--|---|

SPS BUILDING

ROOFING & BUILDING PRODUCTS

SPS Roofing and Building Limited
220B Bush Road, Rosedale, Auckland, New Zealand,
T: +64 9 415 2669 | www.spsbuilding.co.nz

Sheet Title:

Horizontal Panel Joint
Equitone High Density Fibre Cement
T 50 Typical Details

Sheet Status:

Architectural Resource
For Information & Design

Sheet Number:

02

Revision:

A

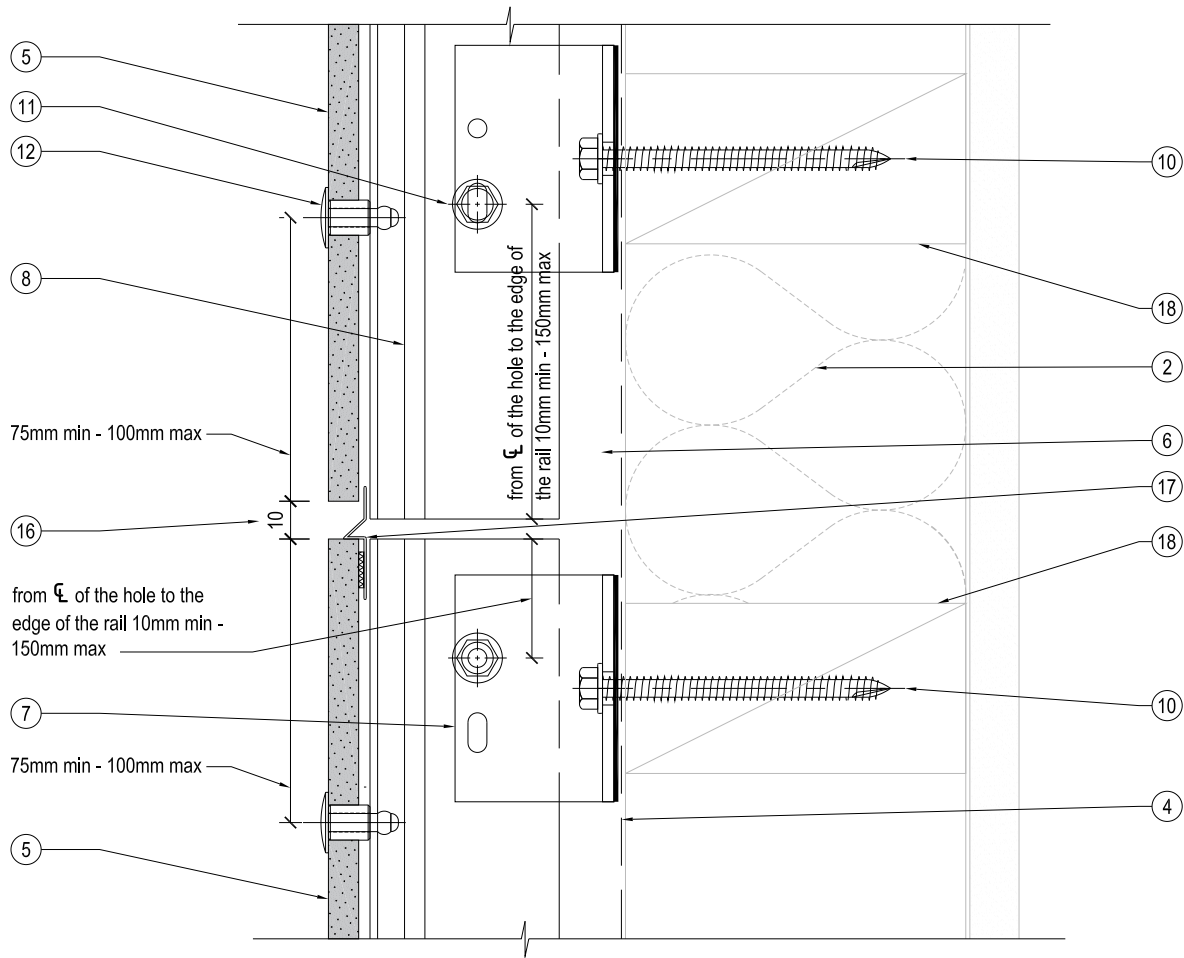
Revision Date

July 2019

Scale @ A4:

1:2

Equitone - T50 - Visible Rivet Fixed



NOTES / SPECIFICATION:

- | | | | | | |
|---|---|--|--|--|---|
| <p>1. DRAINAGE AND VENTILATION SLOT</p> <p>2. INSULATION IF REQUIRED, BY OTHERS</p> <p>3. FRAMING TO NZS3604, BY OTHERS</p> <p>4. AIR BARRIER (RIGID OR FLEXIBLE WALL UNDERLAY), BY OTHERS</p> <p>5. EQUITONE 8MM THICK FIBRE CEMENT PANEL, BY PANEL FABRICATOR</p> <p>6. DRAINED AND VENTILATED CAVITY</p> | <p>7. T50BR AL. MILL FINISH CLADDING SUPPORT BRACKET-OVER BUTYL PAD (MIN 2 PER RAIL, SPACED @ 800mm CRS MAX), BY PANEL FABRICATOR</p> <p>8. T50VR AL. BLACK PC VERTICAL SUPPORT RAIL (SPACED @ 600mm CRS MAX), BY PANEL FABRICATOR</p> <p>9. T50IR AL. MILL FINISH VERTICAL INTERMEDIATE SUPPORT RAIL (SPACED @ 600mm CRS MAX), BY PANEL FABRICATOR</p> | <p>10. SS304(A2) HEX TEK T17 TIP SCREW 14g x 75 mm, BY PANEL FABRICATOR</p> <p>11. SS304(A2) HEX TEK SDS TIP SCREW 14g x 25 mm, BY PANEL FABRICATOR</p> <p>12. PROPRIETARY SS304(A2) 4.8mm RIVET PC OR SS FINISH (MIN 2 PER SHEET, SPACED @ 600mm CRS MAX), BY PANEL FABRICATOR</p> <p>13. PROPRIETARY BLACK PVC FOAM TAPE 6x3mm, CONTINUOUS VERTICAL, BY PANEL FABRICATOR</p> | <p>14. CORNER CLIP PROFILE, FIXED WITH SS304(A2) ST PAN 6g x 12mm (min 2 PER RAIL), BY PANEL FABRICATOR</p> <p>15. ALU/ALU, Nb. 4 CSK POP-RIVET (min 2 PER RAIL, SPACED @ 600mm CRS MAX), BY PANEL FABRICATOR</p> <p>16. 10mm NEGATIVE JOINT</p> <p>17. T50 HR HORIZONTAL FLASHING, BLACK PC FINISH, ADHESIVE FIXING TO TOP EDGE OF THE EQUITONE FIBRE CEMENT PANEL, BY PANEL FABRICATOR</p> | <p>18. STRUCTURAL TIMBER NOG TO NZS3604 PRIOR INSTALLATION, FIXED WITH MINIMUM 3 NAILS, BY OTHERS</p> <p>19. SCREW FIXING, BY PANEL FABRICATOR</p> <p>20. FIXING INTO TIMBER WITH SS304(A2) HEX TEK T17 TIP SCREW 10g x 35 mm @ 400 CRS max, BY PANEL FABRICATOR</p> <p>21. TSUC AL. JAMB CLOSURE PROFILE PC LSG MATT BLACK, CONTINUOUS VERTICAL TO WINDOW JAMB, BY PANEL FABRICATOR</p> | <p>22. BUTYL TAPE 50mm MIN COVER ON EACH SIDE, BY OTHERS</p> <p>23. FOLDED METAL FLASHING TO SUIT, BY OTHERS</p> <p>24. CONTINUOUS FLASHING TAPE, 35mm MIN COVER ON THE FLASHING, BY PANEL FABRICATOR</p> <p>25. FLASHING TAPE DRESSED OVER, BY OTHERS</p> <p>26. FOLDED METAL FLASHING 60mm MIN COVER ON EACH SIDE, BY OTHERS</p> <p>27. SEALANT ON PEK ROD, BY PANEL FABRICATOR</p> |
|---|---|--|--|--|---|

SPS BUILDING
ROOFING & BUILDING PRODUCTS

SPS Roofing and Building Limited
220B Bush Road, Rosedale, Auckland, New Zealand,
T: +64 9 415 2669 | www.spsbuilding.co.nz

Sheet Title:

Horizontal Panel & Rail Joint
Equitone High Density Fibre Cement
T 50 Typical Details

Sheet Status:

Architectural Resource
For Information & Design

Sheet Number:

03

Revision:

A

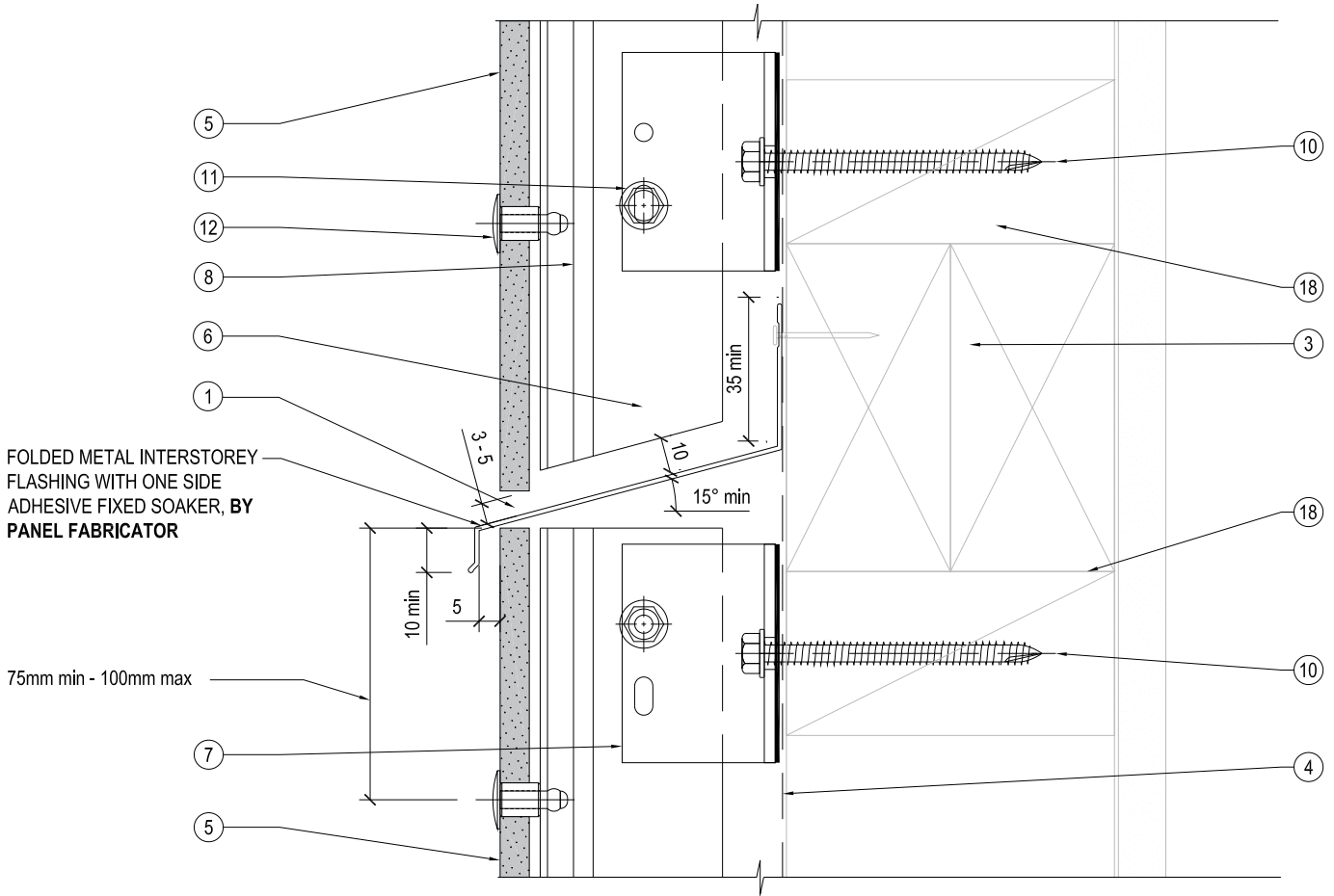
Revision Date

July 2019

Scale @ A4:

1:2

Equitone - T50 - Visible Rivet Fixed



NOTES / SPECIFICATION:

- | | | | | | |
|---|--|--|--|--|---|
| <p>1. DRAINAGE AND VENTILATION SLOT</p> <p>2. INSULATION IF REQUIRED, BY OTHERS</p> <p>3. FRAMING TO NZS3604, BY OTHERS</p> <p>4. AIR BARRIER (RIGID OR FLEXIBLE WALL UNDERLAY), BY OTHERS</p> <p>5. EQUITONE 8MM THICK FIBRE CEMENT PANEL, BY PANEL FABRICATOR</p> <p>6. DRAINED AND VENTILATED CAVITY</p> | <p>7. T50BR AL. MILL FINISH CLADDING SUPPORT BRACKET-COVER BUTYL PAD (MIN 2 PER RAIL, SPACED @ 800mm CRS MAX), BY PANEL FABRICATOR</p> <p>8. T50VR AL. BLACK PC VERTICAL SUPPORT RAIL (SPACED @ 600mm CRS MAX), BY PANEL FABRICATOR</p> <p>9. T50IR AL. MILL FINISH VERTICAL INTERMEDIATE SUPPORT RAIL (SPACED @ 600mm CRS MAX), BY PANEL FABRICATOR</p> | <p>10. SS304(A2) HEX TEK T17 TIP SCREW 14g x 75 mm, BY PANEL FABRICATOR</p> <p>11. SS304(A2) HEX TEK SDS TIP SCREW 14g x 25 mm, BY PANEL FABRICATOR</p> <p>12. PROPRIETARY SS304(A2) 4.8mm RIVET PC OR SS FINISH (MIN 2 PER SHEET, SPACED @ 600mm CRS MAX), BY PANEL FABRICATOR</p> <p>13. PROPRIETARY BLACK PVC FOAM TAPE 6mm, CONTINUOUS VERTICAL, BY PANEL FABRICATOR</p> | <p>14. CORNER CLIP PROFILE, FIXED WITH SS304(A2) ST PAN 6g x 12mm (min 2 PER RAIL), BY PANEL FABRICATOR</p> <p>15. ALU/ALU, No. 4 CSK POP-RIVET (min 2 PER RAIL, SPACED @ 600mm CRS MAX), BY PANEL FABRICATOR</p> <p>16. 10mm NEGATIVE JOINT</p> <p>17. T50 HR HORIZONTAL FLASHING, BLACK PC FINISH, ADHESIVE FIXING TO TOP EDGE OF THE EQUITONE FIBRE CEMENT PANEL, BY PANEL FABRICATOR</p> | <p>18. STRUCTURAL TIMBER NOG TO NZS3604 PRIOR INSTALLATION, FIXED WITH MINIMUM 3 NAILS, BY OTHERS</p> <p>19. SCREW FIXING, BY PANEL FABRICATOR</p> <p>20. FIXING INTO TIMBER WITH SS304(A2) HEX TEK T17 TIP SCREW 10g x 35 mm @ 400 CRS max, BY PANEL FABRICATOR</p> <p>21. T50J AL. JAMB CLOSURE PROFILE PC LSG MATT BLACK, CONTINUOUS VERTICAL TO WINDOW JAMB, BY PANEL FABRICATOR</p> | <p>22. BUTYL TAPE 50mm MIN COVER ON EACH SIDE, BY OTHERS</p> <p>23. FOLDED METAL FLASHING TO SUIT, BY OTHERS</p> <p>24. CONTINUOUS FLASHING TAPE, 35mm MIN COVER ON THE FLASHING, BY PANEL FABRICATOR</p> <p>25. FLASHING TAPE DRESSED OVER, BY OTHERS</p> <p>26. FOLDED METAL FLASHING 60mm MIN COVER ON EACH SIDE, BY OTHERS</p> <p>27. SEALANT ON PEF ROD, BY PANEL FABRICATOR</p> |
|---|--|--|--|--|---|

SPS BUILDING
ROOFING & BUILDING PRODUCTS

SPS Roofing and Building Limited
220B Bush Road, Rosedale, Auckland, New Zealand,
T : +64 9 415 2669 | www.spsbuilding.co.nz

Sheet Title:

Interstorey Horizontal Panel & Rail Joint
Equitone High Density Fibre Cement
T 50 Typical Details



Sheet Status:

Architectural Resource
For Information & Design

Sheet Number:

04

Revision:

A

Revision Date

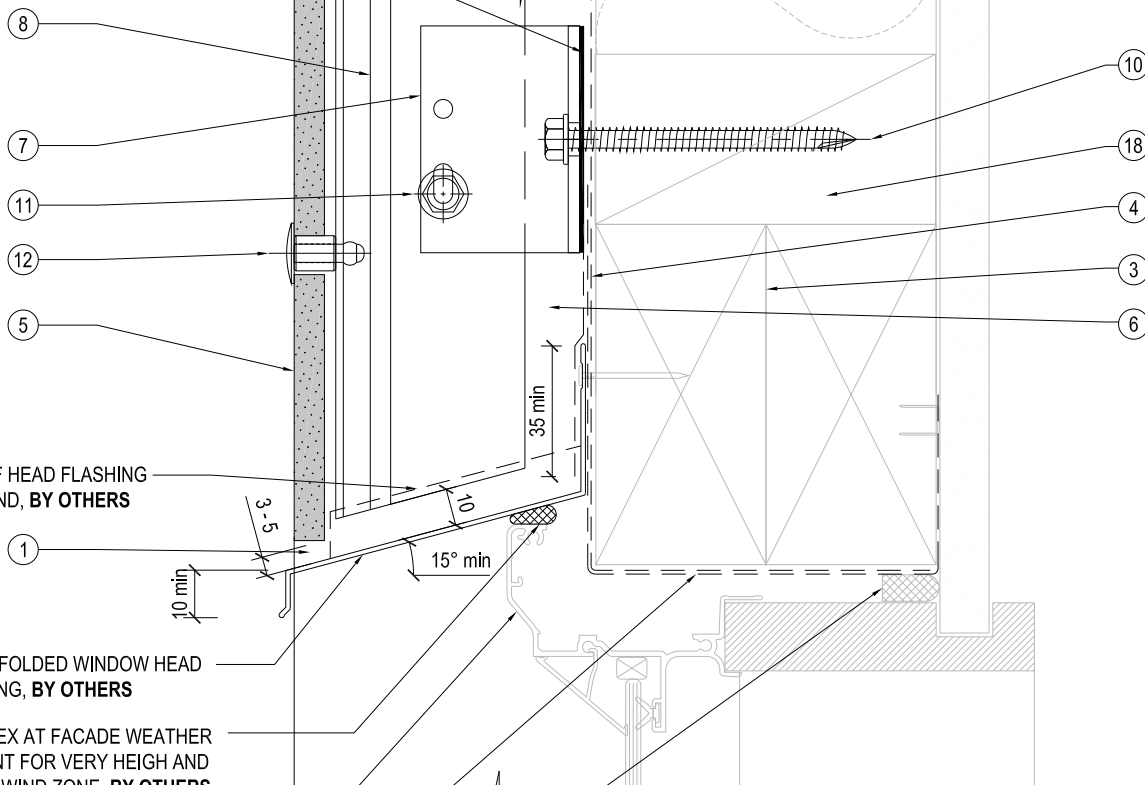
July 2019

Scale @ A4:

1:2

Equitone - T50 - Visible Rivet Fixed

CONTINUOUS FLASHING TAPE TO THE WINDOW HEAD FLASHING, BY OTHERS



LINE OF HEAD FLASHING STOPPEND, BY OTHERS

METAL FOLDED WINDOW HEAD FLASHING, BY OTHERS

SIKAFLEX AT FACADE WEATHER SEALANT FOR VERY HEIGH AND ABOVE WIND ZONE, BY OTHERS

WINDOW PROFILE BY OTHERS TO BE SELECTED TO ACHIEVE COVER SHOWN IN DETAILS

WALL UNDERLAY DRESSED INTO OPENING WITH FLEXIBLE FLASHING TAPE INSTALLED OVER WRAP TO CORNERS AT HEAD, BY OTHERS

CONTINUOUS AIR SEAL, BY OTHERS

NOTES / SPECIFICATION:

- | | | | | | |
|---|---|--|---|--|--|
| <p>1. DRAINAGE AND VENTILATION SLOT
INSULATION IF REQUIRED, BY OTHERS
FRAMING TO NZS3604, BY OTHERS
AIR BARRIER (RIGID OR FLEXIBLE WALL UNDERLAY), BY OTHERS
EQUITONE 8MM THICK FIBRE CEMENT PANEL, BY PANEL FABRICATOR
DRAINED AND VENTILATED CAVITY</p> | <p>7. T50BR AL. MILL FINISH CLADDING SUPPORT BRACKET-OVER BUTYL PAD (MIN 2 PER RAIL, SPACED @ 800mm CRS MAX), BY PANEL FABRICATOR
T50VRL AL. BLACK PVC VERTICAL SUPPORT RAIL (SPACED @ 600mm CRS MAX), BY PANEL FABRICATOR
T50IR AL. MILL FINISH VERTICAL INTERMEDIATE SUPPORT RAIL (SPACED @ 600mm CRS MAX), BY PANEL FABRICATOR</p> | <p>10. SS304(A2) HEX TEK T17 TIP SCREW 14g x 75 mm, BY PANEL FABRICATOR
SS304(A2) HEX TEK SDS TIP SCREW 14g x 25 mm, BY PANEL FABRICATOR
PROPRIETARY SS304(A2) 4.8 mm RIVET PC OR SS FINISH (MIN 2 PER SHEET, SPACED @ 600mm CRS MAX), BY PANEL FABRICATOR
PROPRIETARY BLACK PVC FOAM TAPE 6x3mm, CONTINUOUS VERTICAL, BY PANEL FABRICATOR</p> | <p>14. CORNER CLIP PROFILE, FIXED WITH SS304(A2) ST PAN 6g x 12mm (min 2 PER RAIL), BY PANEL FABRICATOR
ALUJALU. Nb. 4 CSK POP-RIVET (min 2 PER RAIL, SPACED @ 600mm CRS MAX), BY PANEL FABRICATOR
10mm NEGATIVE JOINT
T50 HR HORIZONTAL FLASHING, BLACK PC FINISH, ADHESIVE FIXING TO TOP EDGE OF THE EQUITONE FIBRE CEMENT PANEL, BY PANEL FABRICATOR</p> | <p>18. STRUCTURAL TIMBER NOG TO NZS3604 PRIOR INSTALLATION, FIXED WITH MINIMUM 3 NAILS, BY OTHERS
SCREW FIXING, BY PANEL FABRICATOR
FIXING INTO TIMBER WITH SS304(A2) HEX TEK T17 TIP SCREW 10g x 35 mm @ 400 CRS max, BY PANEL FABRICATOR
T50J AL. JAMB CLOSURE PROFILE, PC LSG MATT BLACK, CONTINUOUS VERTICAL TO WINDOW JAMB, BY PANEL FABRICATOR</p> | <p>22. BUTYL TAPE 50mm MIN COVER ON EACH SIDE, BY OTHERS
FOLDED METAL FLASHING TO SUIT, BY OTHERS
CONTINUOUS FLASHING TAPE, 35mm MIN COVER ON THE FLASHING, BY PANEL FABRICATOR
FLASHING TAPE DRESSED OVER, BY OTHERS
FOLDED METAL FLASHING 60mm MIN COVER ON EACH SIDE, BY OTHERS
SEALANT ON PEK ROD, BY PANEL FABRICATOR</p> |
|---|---|--|---|--|--|

SPS BUILDING
ROOFING & BUILDING PRODUCTS

SPS Roofing and Building Limited
220B Bush Road, Rosedale, Auckland, New Zealand,
T: +64 9 415 2669 | www.spsbuilding.co.nz

Sheet Title:

Residential Window Head
Equitone High Density Fibre Cement
T 50 Typical Details

Sheet Status:

Architectural Resource
For Information & Design

Sheet Number:

05

Revision:

A

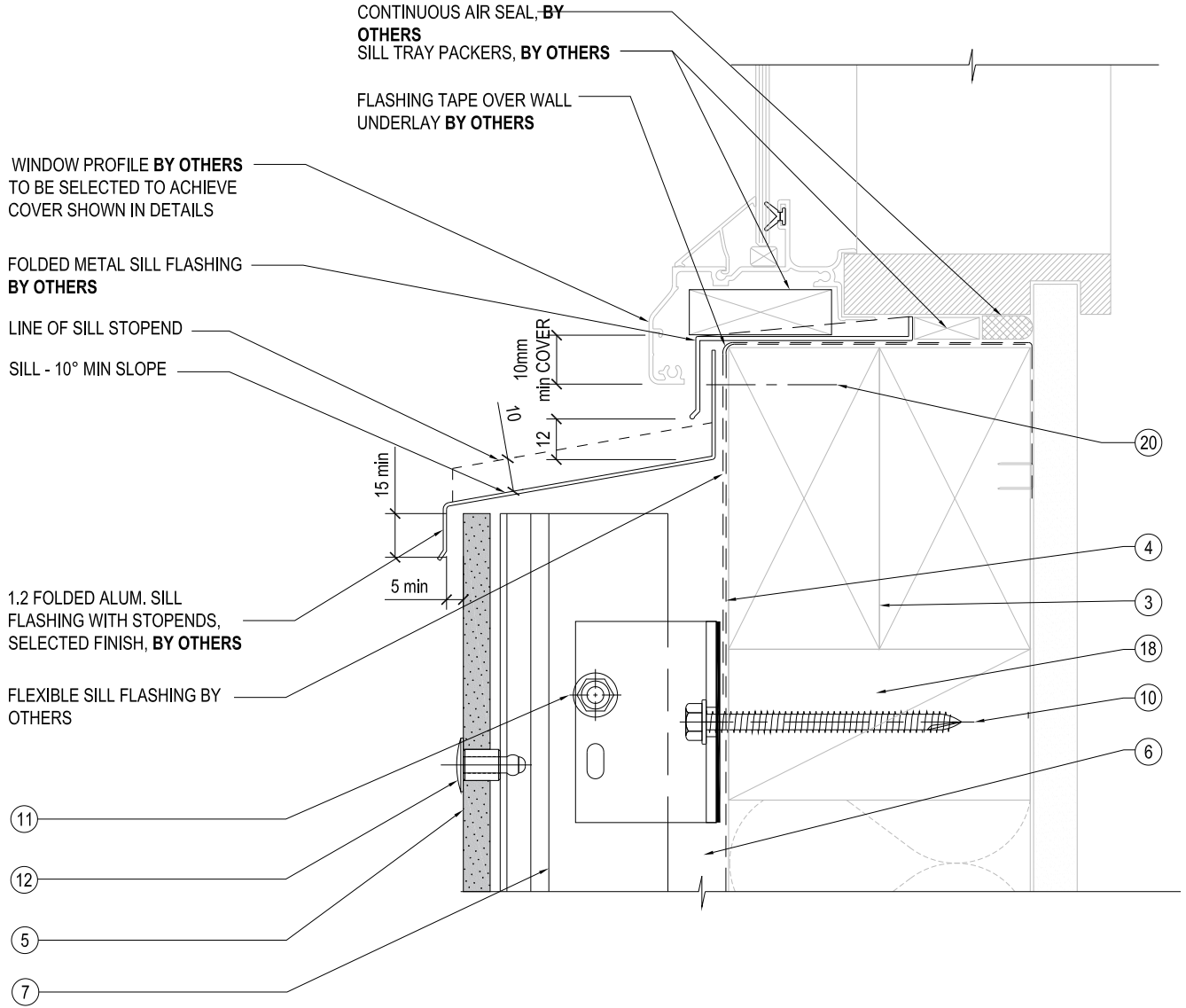
Revision Date

July 2019

Scale @ A4:

1:2

Equitone - T50 - Visible Rivet Fixed



NOTES / SPECIFICATION :

- | | | | | | |
|---|--|---|--|--|---|
| <p>1. DRAINAGE AND VENTILATION SLOT</p> <p>2. INSULATION IF REQUIRED, BY OTHERS</p> <p>3. FRAMING TO NZS3604, BY OTHERS</p> <p>4. AIR BARRIER (RIGID OR FLEXIBLE WALL UNDERLAY), BY OTHERS</p> <p>5. EQUITONE 8MM THICK FIBRE CEMENT PANEL, BY PANEL FABRICATOR</p> <p>6. DRAINED AND VENTILATED CAVITY</p> | <p>7. T50BR AL. MILL FINISH CLADDING SUPPORT BRACKET-OVER BUTYL PAD (MIN 2 PER RAIL, SPACED @ 800mm CRS MAX), BY PANEL FABRICATOR</p> <p>8. T50VR AL. BLACK PC VERTICAL SUPPORT RAIL (SPACED @ 600mm CRS MAX), BY PANEL FABRICATOR</p> <p>9. T50R AL. MILL FINISH VERTICAL INTERMEDIATE SUPPORT RAIL (SPACED @ 600mm CRS MAX), BY PANEL FABRICATOR</p> | <p>10. SS304(A2) HEX TEK T17 TIP SCREW 14g x 75 mm, BY PANEL FABRICATOR</p> <p>11. SS304(A2) HEX TEK SDS TIP SCREW 14g x 25 mm, BY PANEL FABRICATOR</p> <p>12. PROPRIETARY SS304(A2) 4.8 mm RIVET PC OR SS FINISH (MIN 2 PER SHEET, SPACED @ 600mm CRS MAX), BY PANEL FABRICATOR</p> <p>13. PROPRIETARY BLACK PIG FOAM TAPE 9x3mm, CONTINUOUS VERTICAL, BY PANEL FABRICATOR</p> | <p>14. CORNER CLIP PROFILE, FIXED WITH SS304(A2) ST PAN 8g x 12mm (min 2 PER RAIL), BY PANEL FABRICATOR</p> <p>15. ALU/ALU, No. 4 CSK POP-RIVET (min 2 PER RAIL, SPACED @ 600mm CRS MAX), BY PANEL FABRICATOR</p> <p>16. 10mm NEGATIVE JOINT</p> <p>17. T50 HR HORIZONTAL FLASHING, BLACK PC FINISH, ADHESIVE FIXING TO TOP EDGE OF THE EQUITONE FIBRE CEMENT PANEL, BY PANEL FABRICATOR</p> | <p>18. STRUCTURAL TIMBER NOG TO NZS3604 PRIOR INSTALLATION, FIXED WITH MINIMUM 3 NAILS, BY OTHERS</p> <p>19. SCREW FIXING, BY PANEL FABRICATOR</p> <p>20. FIXING INTO TIMBER WITH SS304(A2) HEX TEK T17 TIP SCREW 10g x 35 mm @ 400 CRS max, BY PANEL FABRICATOR</p> <p>21. TSUC AL. JAMB CLOSURE PROFILE PC LSG MATT BLACK, CONTINUOUS VERTICAL TO WINDOW JAMB, BY PANEL FABRICATOR</p> | <p>22. BUTYL TAPE 50mm MIN COVER ON EACH SIDE, BY OTHERS</p> <p>23. FOLDED METAL FLASHING TO SUIT, BY OTHERS</p> <p>24. CONTINUOUS FLASHING TAPE, 35mm MIN COVER ON THE FLASHING, BY PANEL FABRICATOR</p> <p>25. FLASHING TAPE DRESSED OVER, BY OTHERS</p> <p>26. FOLDED METAL FLASHING 60mm MIN COVER ON EACH SIDE, BY OTHERS</p> <p>27. SEALANT ON PEI ROD, BY PANEL FABRICATOR</p> |
|---|--|---|--|--|---|

SPS BUILDING
ROOFING & BUILDING PRODUCTS

SPS Roofing and Building Limited
220B Bush Road, Rosedale, Auckland, New Zealand,
T: +64 9 415 2669 | www.spsbuilding.co.nz

Sheet Title:

Residential Window Sill
Equitone High Density Fibre Cement
T 50 Typical Details

Sheet Status:

Architectural Resource
For Information & Design

Sheet Number:

06

Revision:

A

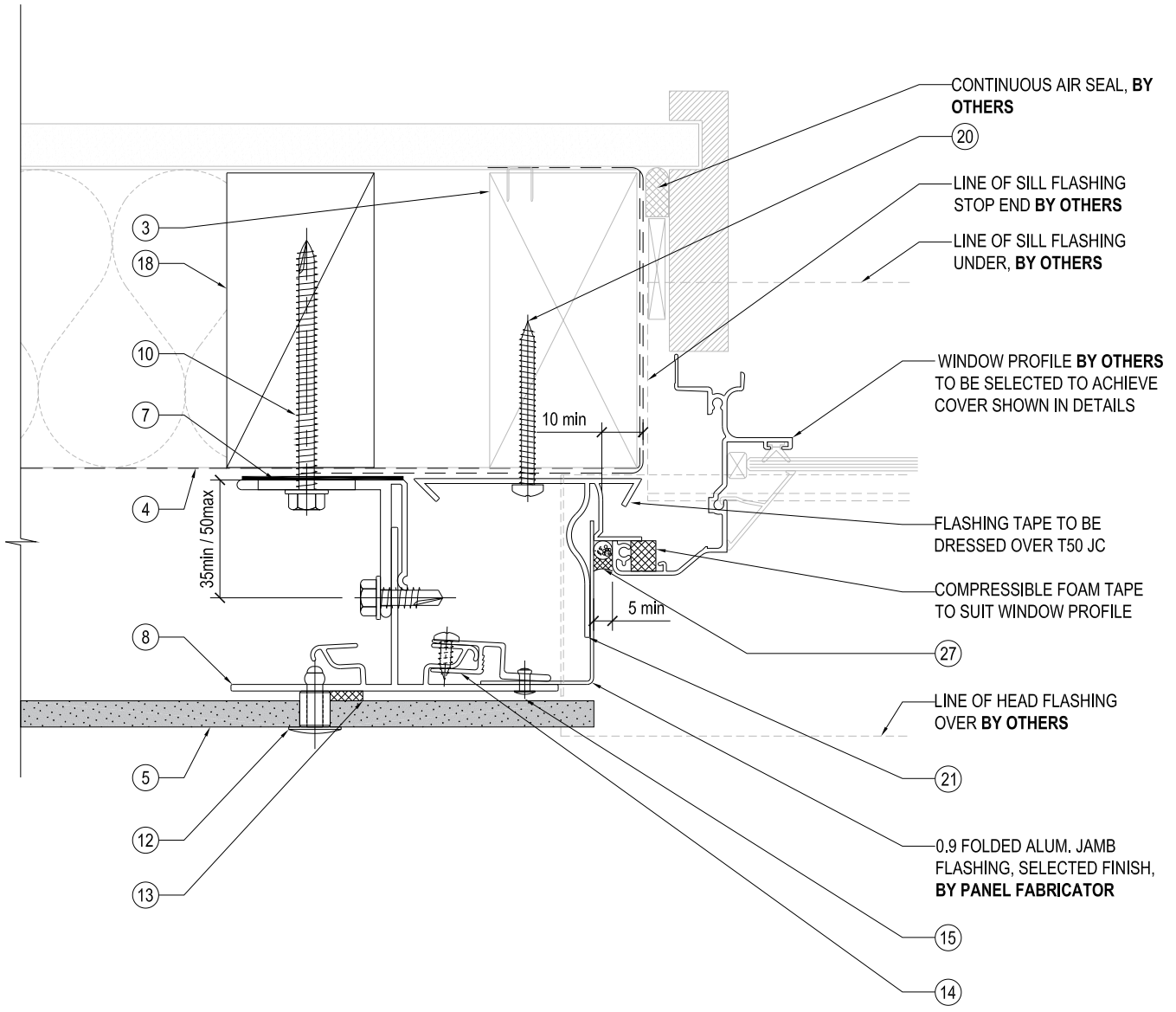
Revision Date

July 2019

Scale @ A4:

1:2

Equitone - T50 - Visible Rivet Fixed



NOTES / SPECIFICATION:

- | | | | | | |
|--|--|--|---|--|---|
| <p>1. DRAINAGE AND VENTILATION SLOT
2. INSULATION IF REQUIRED, BY OTHERS
3. FRAMING TO NZS3604, BY OTHERS
4. AIR BARRIER (RIGID OR FLEXIBLE WALL UNDERLAY), BY OTHERS
5. EQUITONE 8MM THICK FIBRE CEMENT PANEL, BY PANEL FABRICATOR
6. DRAINED AND VENTILATED CAVITY</p> | <p>7. T50BR AL. MILL FINISH CLADDING SUPPORT BRACKET-COVER BUTYL PAD (MIN 2 PER RAIL, SPACED @ 800mm CRS MAX), BY PANEL FABRICATOR
8. T50VR AL. BLACK PC VERTICAL SUPPORT RAIL (SPACED @ 600mm CRS MAX), BY PANEL FABRICATOR
9. T50IR AL. MILL FINISH VERTICAL INTERMEDIATE SUPPORT RAIL (SPACED @ 600mm CRS MAX), BY PANEL FABRICATOR</p> | <p>10. SS304(A2) HEX TEK T17 TIP SCREW 14g x 75 mm, BY PANEL FABRICATOR
11. SS304(A2) HEX TEK SDS TIP SCREW 14g x 25 mm, BY PANEL FABRICATOR
12. PROPRIETARY SS304(A2) 4.8 mm RIVET PC OR SS FINISH (MIN 2 PER SHEET, SPACED @ 600mm CRS MAX), BY PANEL FABRICATOR
13. PROPRIETARY BLACK PVC FOAM TAPE 6x3mm, CONTINUOUS VERTICAL, BY PANEL FABRICATOR</p> | <p>14. CORNER CLIP PROFILE, FIXED WITH SS304(A2) ST PAN 6g x 12mm (min 2 PER RAIL), BY PANEL FABRICATOR
15. ALU/ALU. Nb. 4 CSK POP-RIVET (min 2 PER RAIL, SPACED @ 600mm CRS MAX), BY PANEL FABRICATOR
16. 10mm NEGATIVE JOINT
17. T50 HR HORIZONTAL FLASHING, BLACK PC FINISH, ADHESIVE FIXING TO TOP EDGE OF THE EQUITONE FIBRE CEMENT PANEL, BY PANEL FABRICATOR</p> | <p>18. STRUCTURAL TIMBER NOG TO NZS3604 PRIOR INSTALLATION, FIXED WITH MINIMUM 3 NAILS, BY OTHERS
19. SCREW FIXING, BY PANEL FABRICATOR
20. FIXING INTO TIMBER WITH SS304(A2) HEX TEK T17 TIP SCREW 10g x 35 mm @ 400 CRS max, BY PANEL FABRICATOR
21. T50JC AL. JAMB CLOSURE PROFILE PC LSG MATT BLACK, CONTINUOUS VERTICAL TO WINDOW JAMB, BY PANEL FABRICATOR</p> | <p>22. BUTYL TAPE 50mm MIN COVER ON EACH SIDE, BY OTHERS
23. FOLDED METAL FLASHING TO SUIT, BY OTHERS
24. CONTINUOUS FLASHING TAPE, 35mm MIN COVER ON THE FLASHING, BY PANEL FABRICATOR
25. FLASHING TAPE DRESSED OVER, BY OTHERS
26. FOLDED METAL FLASHING 60mm MIN COVER ON EACH SIDE, BY OTHERS
27. SEALANT ON PE/ROD, BY PANEL FABRICATOR</p> |
|--|--|--|---|--|---|

SPS BUILDING
ROOFING & BUILDING PRODUCTS

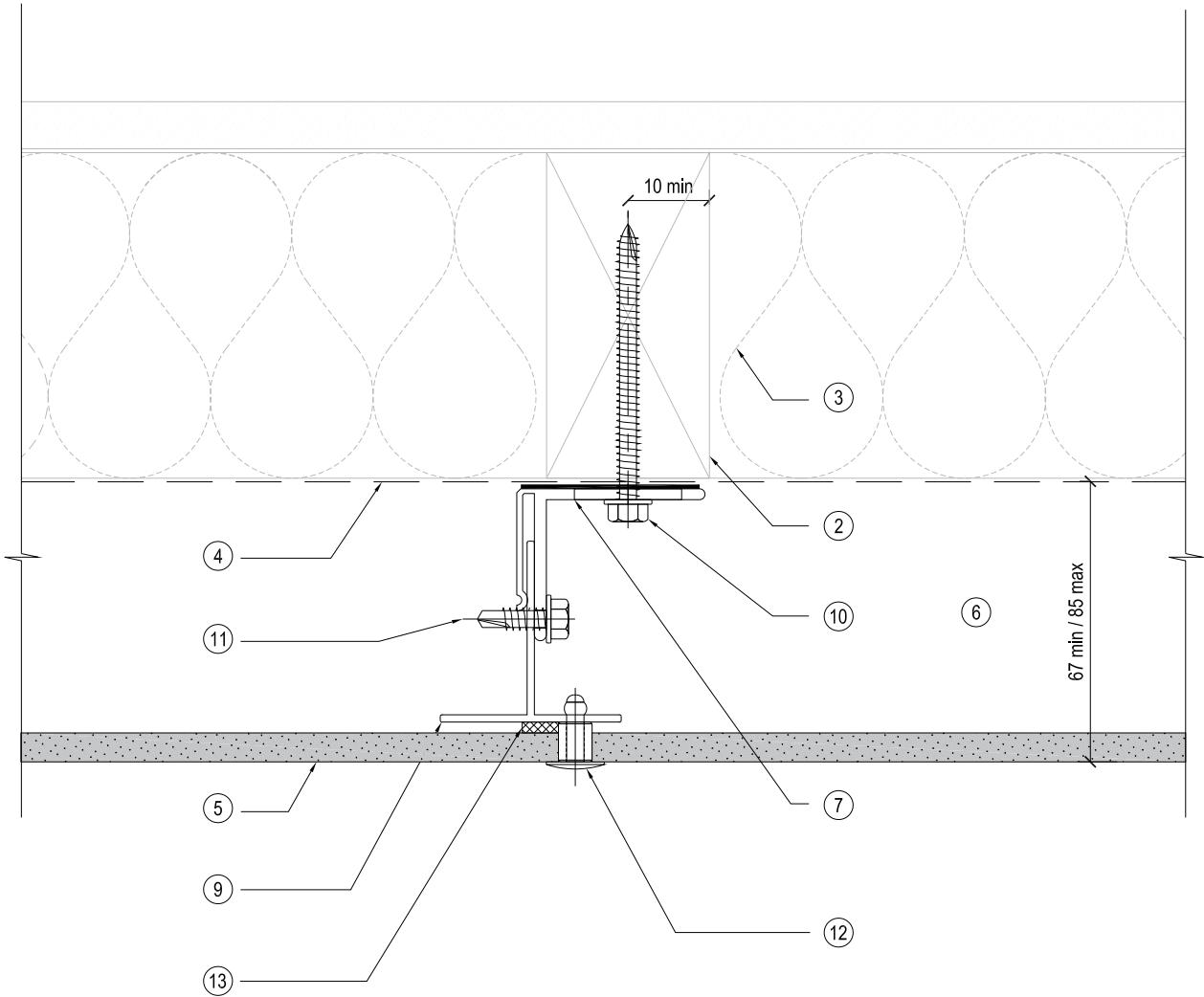
SPS Roofing and Building Limited
220B Bush Road, Rosedale, Auckland, New Zealand,
T: +64 9 415 2669 | www.spsbuilding.co.nz

Sheet Title:
**Residential Window Jamb
Equitone High Density Fibre Cement
T 50 Typical Details**

Sheet Status:
**Architectural Resource
For Information & Design**

Sheet Number: 07	Revision: A
Revision Date	July 2019
Scale @ A4:	1:2

Equitone - T50 - Visible Rivet Fixed



NOTES / SPECIFICATION:

- | | | | | | |
|--|---|---|--|---|--|
| <p>1. DRAINAGE AND VENTILATION SLOT
2. INSULATION IF REQUIRED, BY OTHERS
3. FRAMING TO NZS3604, BY OTHERS
4. AIR BARRIER (RIGID OR FLEXIBLE WALL UNDERLAY), BY OTHERS
5. EQUITONE 3MM THICK FIBRE CEMENT PANEL, BY PANEL FABRICATOR
6. DRAINED AND VENTILATED CAVITY</p> | <p>7. T50BR AL. MILL FINISH CLADDING SUPPORT BRACKET-COVER BUTYL PAD (MIN 2 PER RAIL, SPACED @ 800mm CRS MAX), BY PANEL FABRICATOR
8. T50V/R AL. BLACK PVC VERTICAL SUPPORT RAIL (SPACED @ 800mm CRS MAX), BY PANEL FABRICATOR
9. T50R AL. MILL FINISH VERTICAL INTERMEDIATE SUPPORT RAIL (SPACED @ 800mm CRS MAX), BY PANEL FABRICATOR</p> | <p>10. S530(A2) HEX TEK T17 TIP SCREW 14g x 75 mm, BY PANEL FABRICATOR
11. S530(A2) HEX TEK SDS TIP SCREW 14g x 25 mm, BY PANEL FABRICATOR
12. PROPRIETARY S530(A2) 4.8 mm RIVET PC OR SS FINISH (MIN 2 PER SHEET, SPACED @ 800mm CRS MAX), BY PANEL FABRICATOR
13. PROPRIETARY BLACK PVC FOAM TAPE 9x3mm, CONTINUOUS VERTICAL, BY PANEL FABRICATOR</p> | <p>14. CORNER CLIP PROFILE, FIXED WITH S530(A2) ST PAN 6g x 12mm (min 2 PER RAIL), BY PANEL FABRICATOR
15. ALU/ALU, No. 4 CSK POP-RIVET (min 2 PER RAIL, SPACED @ 800mm CRS MAX), BY PANEL FABRICATOR
16. 10mm NEGATIVE JOINT
17. T50 HR HORIZONTAL FLASHING, BLACK PC FINISH, ADHESIVE FIXING TO TOP EDGE OF THE EQUITONE FIBRE CEMENT PANEL, BY PANEL FABRICATOR</p> | <p>18. STRUCTURAL TIMBER NOG TO NZS3604 PRIOR INSTALLATION, FIXED WITH MINIMUM 3 NAILS, BY OTHERS
19. SCREW FIXING, BY PANEL FABRICATOR
20. FIXING INTO TIMBER WITH S530(A2) HEX TEK T17 TIP SCREW 10g x 35 mm @ 400 CRS max, BY PANEL FABRICATOR
21. T50JL AL. JAMB CLOSURE PROFILE PC LSG MATT BLACK, CONTINUOUS VERTICAL TO WINDOW JAMB, BY PANEL FABRICATOR</p> | <p>22. BUTYL TAPE 50mm MIN COVER ON EACH SIDE, BY OTHERS
23. FOLDED METAL FLASHING TO SUIT, BY OTHERS
24. CONTINUOUS FLASHING TAPE, 35mm MIN COVER ON THE FLASHING, BY PANEL FABRICATOR
25. FLASHING TAPE DRESSED OVER, BY OTHERS
26. FOLDED METAL FLASHING 60mm MIN COVER ON EACH SIDE, BY OTHERS
27. SEALANT ON PEZ ROD, BY PANEL FABRICATOR</p> |
|--|---|---|--|---|--|

SPS BUILDING

ROOFING & BUILDING PRODUCTS

SPS Roofing and Building Limited
220B Bush Road, Rosedale, Auckland, New Zealand,
T : +64 9 415 2669 | www.spsbuilding.co.nz

Sheet Title:

Intermediate Panel Support Rail
Equitone High Density Fibre Cement
T 50 Typical Details

Sheet Status:

Architectural Resource
For Information & Design

Sheet Number:

08

Revision:

A

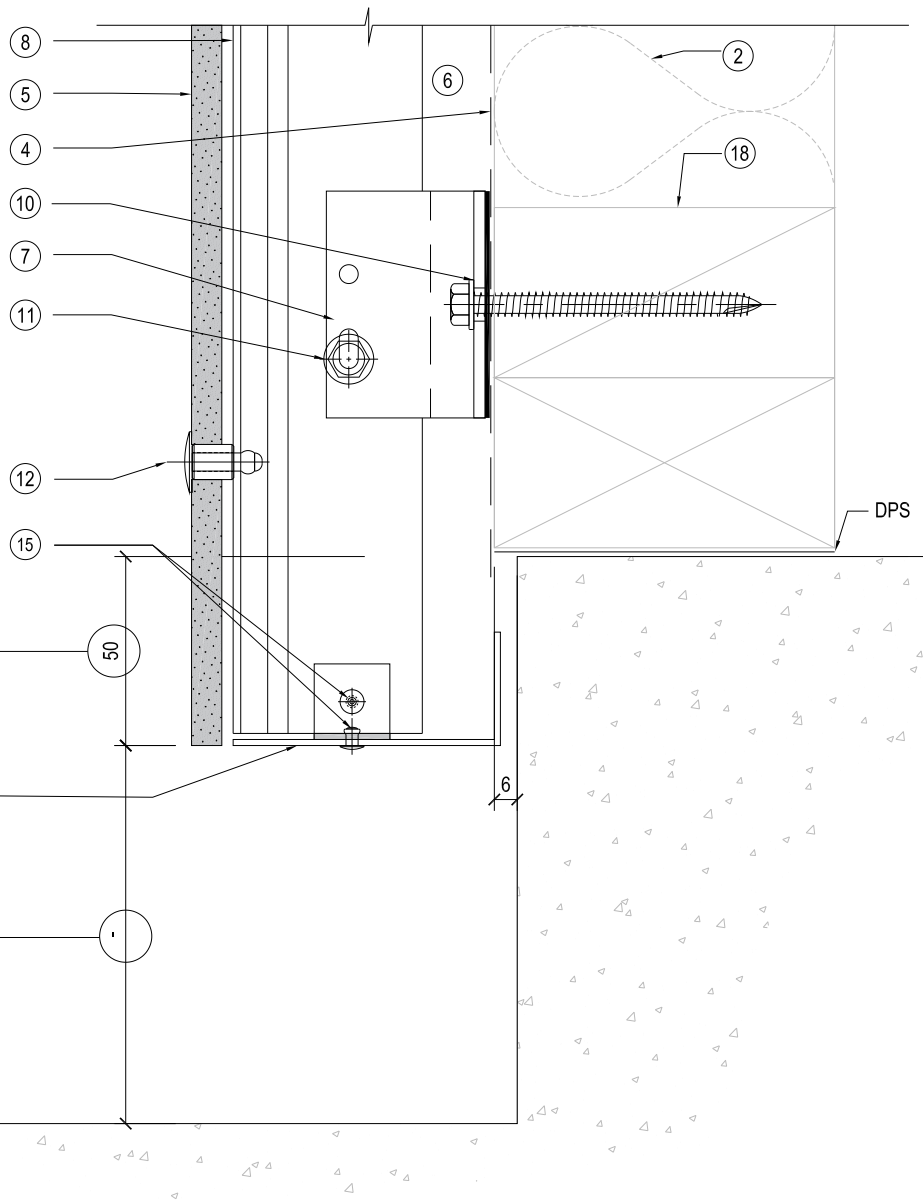
Revision Date

July 2019

Scale @ A4:

1:2

Equitone - T50 - Visible Rivet Fixed



E - 50mm Line of Interior Slab level to Base of exterior wall cladding

Perforated Vermin Flashing
AL. 1.6mm Custom Sheared + Folded To Suit Cavity.
Supported @ Each Rail W/1x AL. 20x20x20x1.6mm EA Tab

C - 100mm For Exterior Paving
D - 175mm For Unpaved Ground
F - 50mm For Garage Floor

NOTES / SPECIFICATION:

- | | | | | | |
|---|---|---|--|---|---|
| 1. DRAINAGE AND VENTILATION SLOT | 7. T50BR AL. MILL FINISH CLADDING SUPPORT BRACKET-COVER BUTYL PAD (MIN 2 PER RAIL, SPACED @ 800mm CRS MAX), BY PANEL FABRICATOR | 10. S5304(A2) HEX TEK T17 TIP SCREW 14g x 75 mm, BY PANEL FABRICATOR | 14. CORNER CLIP PROFILE, FIXED WITH S5304(A2) ST PAN 6g x 12mm (min 2 PER RAIL), BY PANEL FABRICATOR | 18. STRUCTURAL TIMBER NOG TO NZS3604 PRIOR INSTALLATION, FIXED WITH MINIMUM 3 NAILS, BY OTHERS | 22. BUTYL TAPE 50mm MIN COVER ON EACH SIDE, BY OTHERS |
| 2. INSULATION IF REQUIRED, BY OTHERS | 8. T50V/R AL. BLACK PC VERTICAL SUPPORT RAIL (SPACED @ 800mm CRS MAX), BY PANEL FABRICATOR | 11. S5304(A2) HEX TEK SDS TIP SCREW 14g x 25 mm, BY PANEL FABRICATOR | 15. ALU/ALU, No. 4 CSK POP-RIVET (min 2 PER RAIL, SPACED @ 800mm CRS MAX), BY PANEL FABRICATOR | 19. SCREW FIXING, BY PANEL FABRICATOR | 23. FOLDED METAL FLASHING TO SUIT, BY OTHERS |
| 3. FRAMING TO NZS3604, BY OTHERS | 9. T50IR AL. MILL FINISH VERTICAL INTERMEDIATE SUPPORT RAIL (SPACED @ 800mm CRS MAX), BY PANEL FABRICATOR | 12. PROPRIETARY S5304(A2) 4.8 mm RIVET PC OR SS FINISH (MIN 2 PER SHEET, SPACED @ 800mm CRS MAX), BY PANEL FABRICATOR | 16. 10mm NEGATIVE JOINT | 20. FIXING INTO TIMBER WITH S5304(A2) HEX TEK T17 TIP SCREW 10g x 35 mm @ 400 CRS max, BY PANEL FABRICATOR | 24. CONTINUOUS FLASHING TAPE, 35mm MIN COVER ON THE FLASHING, BY PANEL FABRICATOR |
| 4. AIR BARRIER (RIGID OR FLEXIBLE WALL UNDERLAY), BY OTHERS | | 13. PROPRIETARY BLACK PVC FOAM TAPE 9x3mm, CONTINUOUS VERTICAL, BY PANEL FABRICATOR | 17. T50 HR HORIZONTAL FLASHING, BLACK PC FINISH, ADHESIVE FIXING TO TOP EDGE OF THE EQUITONE FIBRE CEMENT PANEL, BY PANEL FABRICATOR | 21. T50JC AL. JAMB CLOSURE PROFILE PC LSG MATT BLACK, CONTINUOUS VERTICAL TO WINDOW JAMB, BY PANEL FABRICATOR | 25. FLASHING TAPE DRESSED OVER, BY OTHERS |
| 5. EQUITONE 3MM THICK FIBRE CEMENT PANEL, BY PANEL FABRICATOR | | | | | 26. FOLDED METAL FLASHING 60mm MIN COVER ON EACH SIDE, BY OTHERS |
| 6. DRAINED AND VENTILATED CAVITY | | | | | 27. SEALANT ON PEF ROD, BY PANEL FABRICATOR |

SPS BUILDING

ROOFING & BUILDING PRODUCTS

SPS Roofing and Building Limited
220B Bush Road, Rosedale, Auckland, New Zealand,
T : +64 9 415 2669 | www.spsbuilding.co.nz

Sheet Title:

Cladding Base Ground Clearance
Equitone High Density Fibre Cement
T 50 Typical Details

Sheet Status:

Architectural Resource
For Information & Design

Sheet Number:

09

Revision:

A

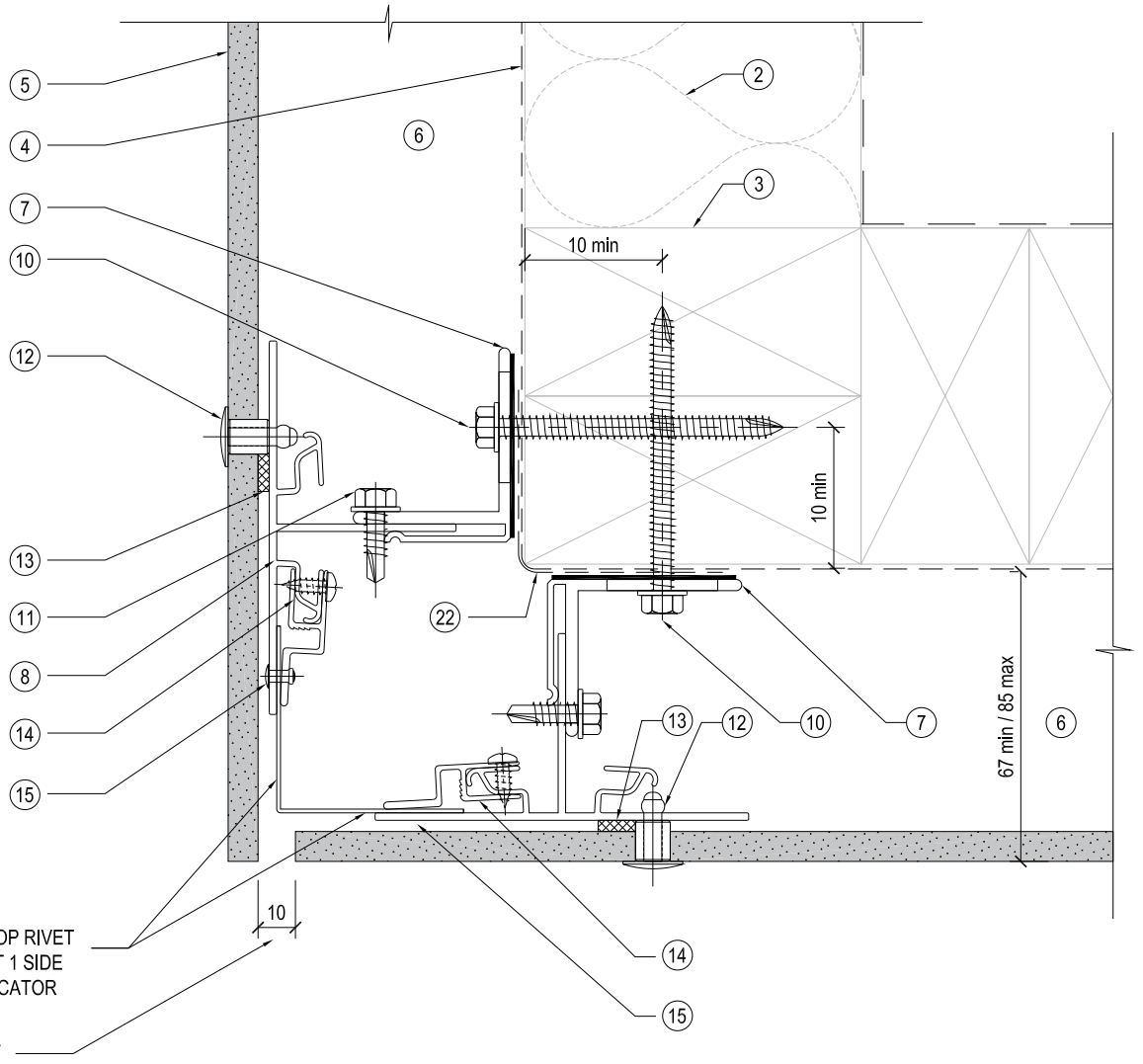
Revision Date:

July 2019

Scale @ A4:

1:2

Equitone - T50 - Visible Rivet Fixed



NOTES / SPECIFICATION:

- | | | | | | |
|---|--|--|--|---|---|
| 1. DRAINAGE AND VENTILATION SLOT | 7. T50BR AL. MILL FINISH CLADDING SUPPORT BRACKET-OVER BUTYL PAD (MIN 2 PER RAIL, SPACED @ 800mm CRS MAX), BY PANEL FABRICATOR | 10. SSS304(A2) HEX TEK T17 TIP SCREW 14g x 75 mm, BY PANEL FABRICATOR | 14. CORNER CLIP PROFILE, FIXED WITH SSS304(A2) ST PAN 6g x 12mm (min 2 PER RAIL), BY PANEL FABRICATOR | 18. STRUCTURAL TIMBER NOG TO NZS3604 PRIOR INSTALLATION, FIXED WITH MINIMUM 3 NAILS, BY OTHERS | 22. BUTYL TAPE 50mm MIN COVER ON EACH SIDE, BY OTHERS |
| 2. INSULATION IF REQUIRED, BY OTHERS | 8. T50VR AL. BLACK PC VERTICAL SUPPORT RAIL (SPACED @ 800mm CRS MAX), BY PANEL FABRICATOR | 11. SSS304(A2) HEX TEK SDS T17 TIP SCREW 14g x 25 mm, BY PANEL FABRICATOR | 15. ALU./ALU. No. 4 CSK POP-RIVET (min 2 PER RAIL, SPACED @ 800mm CRS MAX), BY PANEL FABRICATOR | 19. SCREW FIXING, BY PANEL FABRICATOR | 23. FOLDED METAL FLASHING TO SUIT, BY OTHERS |
| 3. FRAMING TO NZS3604, BY OTHERS | 9. T50IR AL. MILL FINISH VERTICAL INTERMEDIATE SUPPORT RAIL (SPACED @ 800mm CRS MAX), BY PANEL FABRICATOR | 12. PROPRIETARY SSS304(A2) 4.8 mm RIVET PC OR SS FINISH (MIN 2 PER SHEET, SPACED @ 800mm CRS MAX), BY PANEL FABRICATOR | 16. 10mm NEGATIVE JOINT | 20. FIXING INTO TIMBER WITH SSS304(A2) HEX TEK T17 TIP SCREW 10g x 35 mm @ 400 CRS max, BY PANEL FABRICATOR | 24. CONTINUOUS FLASHING TAPE, 35mm MIN COVER ON THE FLASHING, BY PANEL FABRICATOR |
| 4. AIR BARRIER (RIGID OR FLEXIBLE WALL UNDERLAY), BY OTHERS | | 13. PROPRIETARY BLACK PVC FOAM TAPE 9x3mm, CONTINUOUS VERTICAL, BY PANEL FABRICATOR | 17. T50 HR HORIZONTAL FLASHING, BLACK PC FINISH, ADHESIVE FIXING TO TOP EDGE OF THE EQUITONE FIBRE CEMENT PANEL, BY PANEL FABRICATOR | 21. T50JC AL. JAMB CLOSURE PROFILE PC LSG MATT BLACK, CONTINUOUS VERTICAL TO WINDOW JAMB, BY PANEL FABRICATOR | 25. FLASHING TAPE DRESSED OVER, BY OTHERS |
| 5. EQUITONE 3MM THICK FIBRE CEMENT PANEL, BY PANEL FABRICATOR | | | | | 26. FOLDED METAL FLASHING 60mm MIN COVER ON EACH SIDE, BY OTHERS |
| 6. DRAINED AND VENTILATED CAVITY | | | | | 27. SEALANT ON PEJ ROD, BY PANEL FABRICATOR |

SPS BUILDING
ROOFING & BUILDING PRODUCTS

SPS Roofing and Building Limited
220B Bush Road, Rosedale, Auckland, New Zealand,
T : +64 9 415 2669 | www.spsbuilding.co.nz

Sheet Title:

External Corner
Equitone High Density Fibre Cement
T 50 Typical Details

Sheet Status:

Architectural Resource
For Information & Design

Sheet Number:

10

Revision:

A

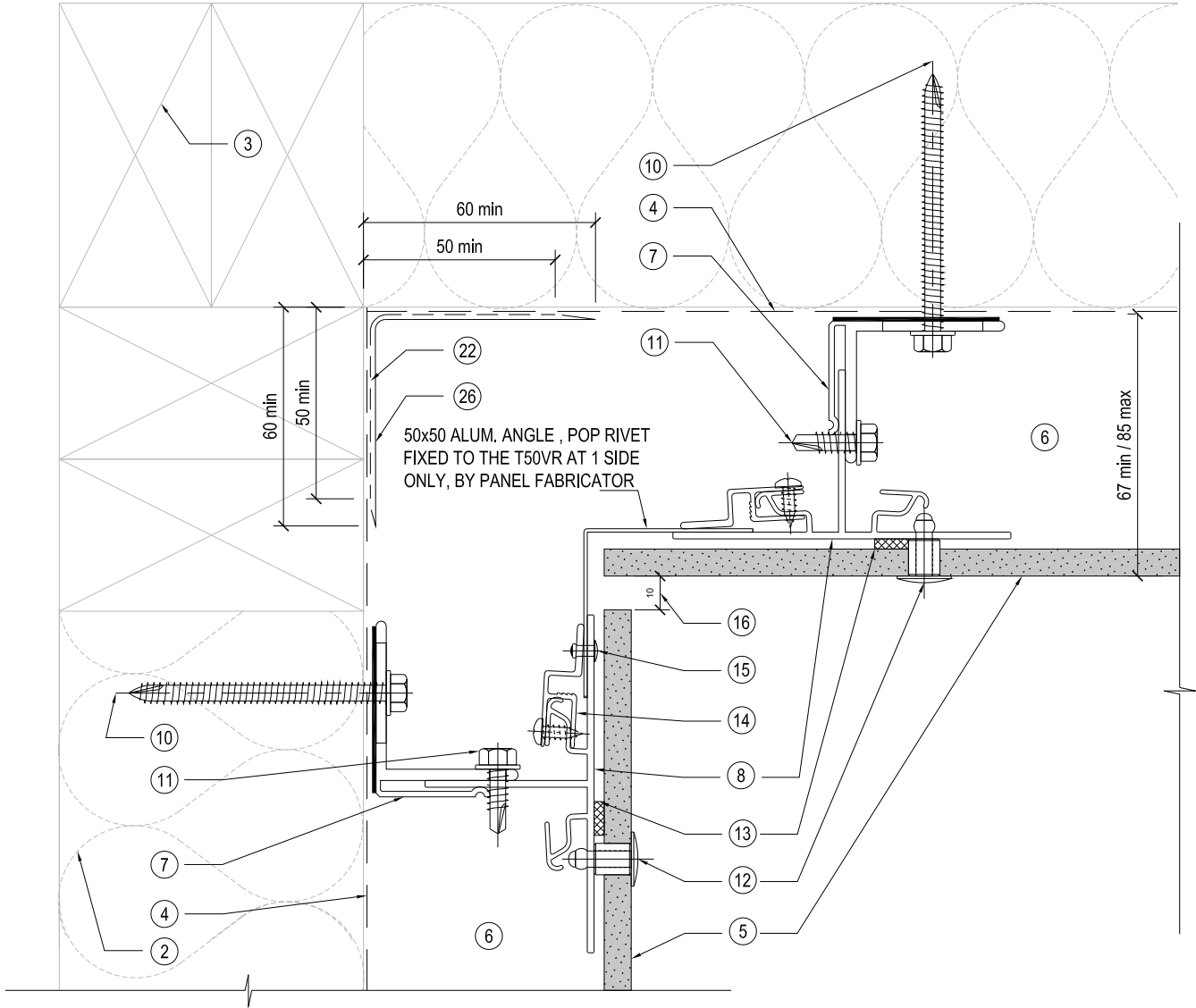
Revision Date

July 2019

Scale @ A4:

1:2

Equitone - T50 - Visible Rivet Fixed



NOTES / SPECIFICATION:

- | | | | | | |
|---|---|---|---|---|---|
| <p>1. DRAINAGE AND VENTILATION SLOT</p> <p>2. INSULATION IF REQUIRED, BY OTHERS</p> <p>3. FRAMING TO NZS3604, BY OTHERS</p> <p>4. AIR BARRIER (RIGID OR FLEXIBLE WALL UNDERLAY), BY OTHERS</p> <p>5. EQUITONE 3MM THICK FIBRE CEMENT PANEL, BY PANEL FABRICATOR</p> <p>6. DRAINED AND VENTILATED CAVITY</p> | <p>7. T50BR AL. MILL FINISH CLADDING SUPPORT BRACKET-COVER BUTYL PAD (MIN 2 PER RAIL, SPACED @ 800mm CRS MAX), BY PANEL FABRICATOR</p> <p>8. T50VR AL. BLACK PC VERTICAL SUPPORT RAIL (SPACED @ 800mm CRS MAX), BY PANEL FABRICATOR</p> <p>9. T50R AL. MILL FINISH VERTICAL INTERMEDIATE SUPPORT RAIL (SPACED @ 800mm CRS MAX), BY PANEL FABRICATOR</p> | <p>10. S5304(A2) HEX TEK T17 TIP SCREW 14g x 75 mm, BY PANEL FABRICATOR</p> <p>11. S5304(A2) HEX TEK SDS TIP SCREW 14g x 25 mm, BY PANEL FABRICATOR</p> <p>12. PROPRIETARY S5304(A2) 4.8 mm RIVET PC OR SS FINISH (MIN 2 PER SHEET, SPACED @ 800mm CRS MAX), BY PANEL FABRICATOR</p> <p>13. PROPRIETARY BLACK PVC FOAM TAPE 9x3mm, CONTINUOUS VERTICAL, BY PANEL FABRICATOR</p> | <p>14. CORNER CLIP PROFILE, FIXED WITH S5304(A2) ST PAN 6g x 12mm (min 2 PER RAIL), BY PANEL FABRICATOR</p> <p>15. ALU./ALU. No. 4 CSK POP-RIVET (min 2 PER RAIL, SPACED @ 800mm CRS MAX), BY PANEL FABRICATOR</p> <p>16. 10mm NEGATIVE JOINT</p> <p>17. T50 HR HORIZONTAL FLASHING, BLACK PC FINISH, ADHESIVE FINING TO TOP EDGE OF THE EQUITONE FIBRE CEMENT PANEL, BY PANEL FABRICATOR</p> | <p>18. STRUCTURAL TIMBER NOG TO NZS3604 PRIOR INSTALLATION, FIXED WITH MINIMUM 3 NAILS, BY OTHERS</p> <p>19. SCREW FIXING, BY PANEL FABRICATOR</p> <p>20. FIXING INTO TIMBER WITH S5304(A2) HEX TEK T17 TIP SCREW 10g x 35 mm @ 400 CRS max, BY PANEL FABRICATOR</p> <p>21. T50JC AL. JAMB CLOSURE PROFILE PC LSG MATT BLACK, CONTINUOUS VERTICAL TO WINDOW JAMB, BY PANEL FABRICATOR</p> | <p>22. BUTYL TAPE 50mm MIN COVER ON EACH SIDE, BY OTHERS</p> <p>23. FOLDED METAL FLASHING TO SUIT, BY OTHERS</p> <p>24. CONTINUOUS FLASHING TAPE, 35mm MIN COVER ON THE FLASHING, BY PANEL FABRICATOR</p> <p>25. FLASHING TAPE DRESSED OVER, BY OTHERS</p> <p>26. FOLDED METAL FLASHING 60mm MIN COVER ON EACH SIDE, BY OTHERS</p> <p>27. SEALANT ON PEJ ROD, BY PANEL FABRICATOR</p> |
|---|---|---|---|---|---|

SPS BUILDING
ROOFING & BUILDING PRODUCTS

SPS Roofing and Building Limited
220B Bush Road, Rosedale, Auckland, New Zealand,
T: +64 9 415 2669 | www.spsbuilding.co.nz

Sheet Title:

Internal Corner
Equitone High Density Fibre Cement
T 50 Typical Details

Sheet Status:

Architectural Resource
For Information & Design

Sheet Number:

11

Revision:

A

Revision Date

July 2019

Scale @ A4:

1:2

Equitone - T50 - Visible Rivet Fixed

ALUM. 'J' PROFILE TO SUITE, MILL FINISH, APPROVED POP-RIVET FIXING (min 2 PER BAR 400 @ CRS MAX), BY PANEL FABRICATOR

1.6mm FOLDED METAL PARAPET FLASHING TO COMPLY WITH E2 BUILDING CODE, BY OTHERS

25
APPROVED FIXINGS, BY OTHERS

UNDERLAY TO PROVIDE SEPARATION BETWEEN PARAPET FLASHING AND THE PLYWOOD

PLYWOOD BACKING WITH 8mm REBATE FOR PARAPET SOAKER

TO COMPLY WITH E2 BUILDING CODE
55 min

25
PACKER TO SUITE, BY OTHERS

to comply with E2 building code
55 min

APPROVED FIXINGS, BY OTHERS

200mm WIDE 1.2mm THICK FOLDED METAL SOAKER

SELECTED INSIDE PARAPET WALL LINING, BY OTHERS

12

11

7

8

5

6

4

10

3

2

NOTES / SPECIFICATION:

- | | | | | | |
|---|--|---|--|---|---|
| 1. DRAINAGE AND VENTILATION SLOT | 7. T50BR AL. MILL FINISH CLADDING SUPPORT BRACKET-OVER BUTYL PAD (MIN 2 PER RAIL, SPACED @ 800mm CRS MAX), BY PANEL FABRICATOR | 10. S5304(A2) HEX TEK T17 TIP SCREW 14g x 75 mm, BY PANEL FABRICATOR | 14. CORNER CLIP PROFILE, FIXED WITH S5304(A2) ST PAN 6g x 12mm (min 2 PER RAIL), BY PANEL FABRICATOR | 18. STRUCTURAL TIMBER NOG TO NZS3604 PRIOR INSTALLATION, FIXED WITH MINIMUM 3 NAILS, BY OTHERS | 22. BUTYL TAPE 50mm MIN COVER ON EACH SIDE, BY OTHERS |
| 2. INSULATION IF REQUIRED, BY OTHERS | 8. T50V/R AL. BLACK PC VERTICAL SUPPORT RAIL (SPACED @ 800mm CRS MAX), BY PANEL FABRICATOR | 11. S5304(A2) HEX TEK SDS T1P SCREW 14g x 25 mm, BY PANEL FABRICATOR | 15. ALU/ALU, No. 4 CSK POP-RIVET (min 2 PER RAIL, SPACED @ 800mm CRS MAX), BY PANEL FABRICATOR | 19. SCREW FIXING, BY PANEL FABRICATOR | 23. FOLDED METAL FLASHING TO SUIT, BY OTHERS |
| 3. FRAMING TO NZS3604, BY OTHERS | 9. T50R AL. MILL FINISH VERTICAL INTERMEDIATE SUPPORT RAIL (SPACED @ 800mm CRS MAX), BY PANEL FABRICATOR | 12. PROPRIETARY S5304(A2) 4.8 mm RIVET PC OR SS FINISH (MIN 2 PER SHEET, SPACED @ 800mm CRS MAX), BY PANEL FABRICATOR | 16. 10mm NEGATIVE JOINT | 20. FIXING INTO TIMBER WITH S5304(A2) HEX TEK T17 TIP SCREW 10g x 35 mm @ 400 CRS max, BY PANEL FABRICATOR | 24. CONTINUOUS FLASHING TAPE, 35mm MIN COVER ON THE FLASHING, BY PANEL FABRICATOR |
| 4. AIR BARRIER (RIGID OR FLEXIBLE WALL UNDERLAY), BY OTHERS | | 13. PROPRIETARY BLACK PVC FOAM TAPE 9x3mm, CONTINUOUS VERTICAL, BY PANEL FABRICATOR | 17. T50 HR HORIZONTAL FLASHING, BLACK PC FINISH, ADHESIVE FIXING TO TOP EDGE OF THE EQUITONE FIBRE CEMENT PANEL, BY PANEL FABRICATOR | 21. TSUJC AL. JAMB CLOSURE PROFILE PC LSG MATT BLACK, CONTINUOUS VERTICAL TO WINDOW JAMB, BY PANEL FABRICATOR | 25. FLASHING TAPE DRESSED OVER, BY OTHERS |
| 5. EQUITONE 3MM THICK FIBRE CEMENT PANEL, BY PANEL FABRICATOR | | | | | 26. FOLDED METAL FLASHING 60mm MIN COVER ON EACH SIDE, BY OTHERS |
| 6. DRAINED AND VENTILATED CAVITY | | | | | 27. SEALANT ON PEJ ROD, BY PANEL FABRICATOR |

SPS BUILDING

ROOFING & BUILDING PRODUCTS

SPS Roofing and Building Limited
220B Bush Road, Rosedale, Auckland, New Zealand,
T: +64 9 415 2669 | www.spsbuilding.co.nz

Sheet Title:

Parapet Horizontal Junction
Equitone High Density Fibre Cement
T 50 Typical Details

Sheet Status:

Architectural Resource
For Information & Design

Sheet Number:

12

Revision:

A

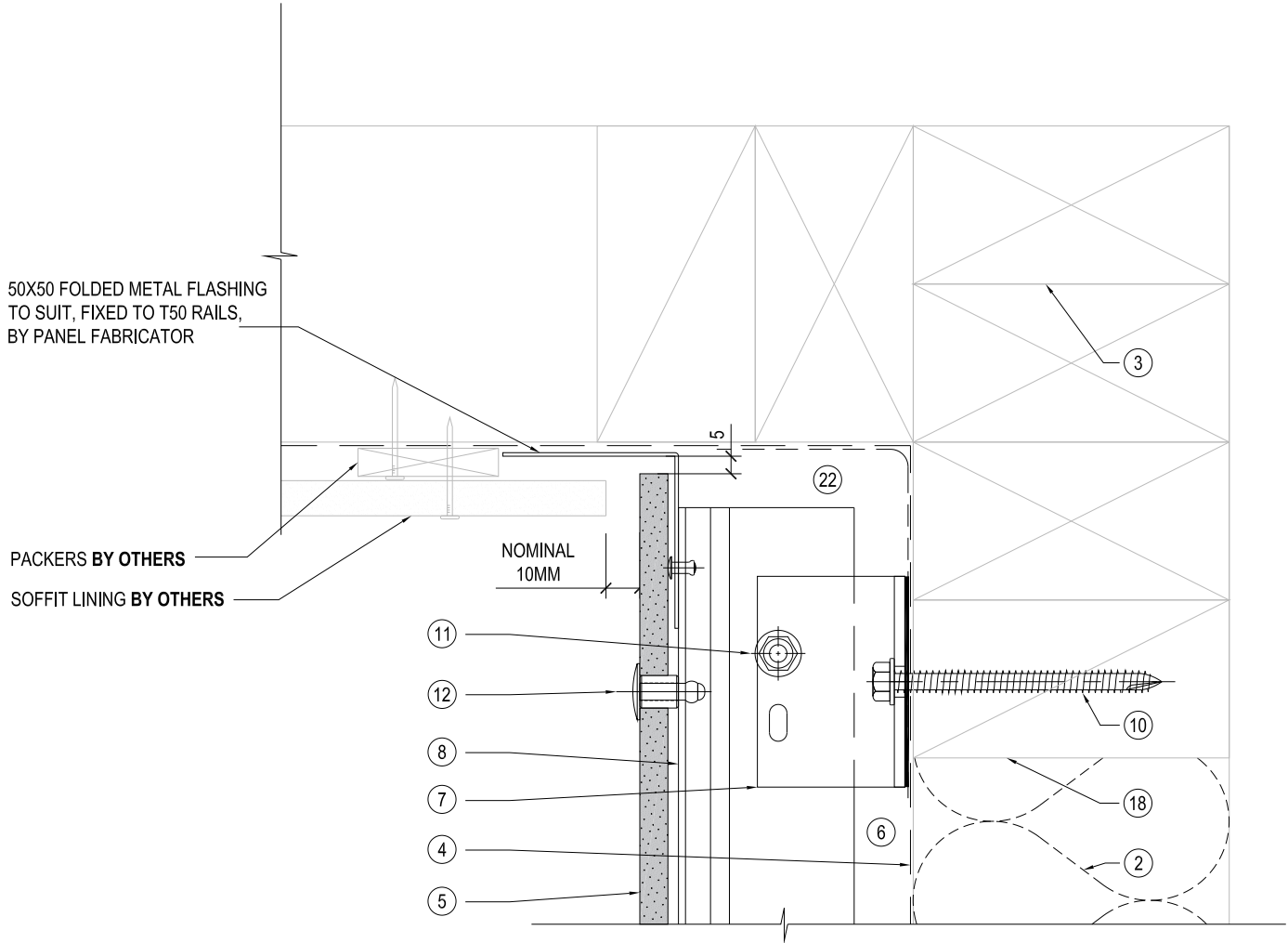
Revision Date

July 2019

Scale @ A4:

1:2

Equitone - T50 - Visible Rivet Fixed



NOTES / SPECIFICATION:

- | | | | | | |
|--|---|--|--|--|---|
| <p>1. DRAINAGE AND VENTILATION SLOT</p> <p>2. INSULATION IF REQUIRED, BY OTHERS</p> <p>3. FRAMING TO NZS3604, BY OTHERS</p> <p>4. AIR BARRIER (RIGID OR FLEXIBLE WALL UNDERLAY), BY OTHERS</p> <p>5. EQUISTONE 6MM THICK FIBRE CEMENT PANEL, BY PANEL FABRICATOR</p> <p>6. DRAINED AND VENTILATED CAVITY</p> | <p>7. T50BR AL. MILL FINISH CLADDING SUPPORT BRACKET-OVER BUTYL PAD (MIN 2 PER RAIL, SPACED @ 800mm CRS MAX), BY PANEL FABRICATOR</p> <p>8. T50V/R AL. BLACK PC VERTICAL SUPPORT RAIL (SPACED @ 800mm CRS MAX), BY PANEL FABRICATOR</p> <p>9. T50R AL. MILL FINISH VERTICAL INTERMEDIATE SUPPORT RAIL (SPACED @ 800mm CRS MAX), BY PANEL FABRICATOR</p> | <p>10. S530(A2) HEX TEK T17 TIP SCREW 14g x 75 mm, BY PANEL FABRICATOR</p> <p>11. S530(A2) HEX TEK SDS TIP SCREW 14g x 25 mm, BY PANEL FABRICATOR</p> <p>12. PROPRIETARY S530(A2) 4.8 mm RIVET PC OR SS FINISH (MIN 2 PER SHEET, SPACED @ 800mm CRS MAX), BY PANEL FABRICATOR</p> <p>13. PROPRIETARY BLACK PVC FOAM TAPE 9x3mm, CONTINUOUS VERTICAL, BY PANEL FABRICATOR</p> | <p>14. CORNER CLIP PROFILE, FIXED WITH S530(A2) ST PAN 6g x 12mm (min 2 PER RAIL), BY PANEL FABRICATOR</p> <p>15. ALU/ALU, No. 4 CSK POP-RIVET (min 2 PER RAIL, SPACED @ 800mm CRS MAX), BY PANEL FABRICATOR</p> <p>16. 10mm NEGATIVE JOINT</p> <p>17. T50 HR HORIZONTAL FLASHING, BLACK PC FINISH, ADHESIVE FIXING TO TOP EDGE OF THE EQUISTONE FIBRE CEMENT PANEL, BY PANEL FABRICATOR</p> | <p>18. STRUCTURAL TIMBER NOG TO NZS3604 PRIOR INSTALLATION, FIXED WITH MINIMUM 3 NAILS, BY OTHERS</p> <p>19. SCREW FIXING, BY PANEL FABRICATOR</p> <p>20. FIXING INTO TIMBER WITH S530(A2) HEX TEK T17 TIP SCREW 10g x 35 mm @ 400 CRS max, BY PANEL FABRICATOR</p> <p>21. T50JL AL. JAMB CLOSURE PROFILE PC LSG MATT BLACK, CONTINUOUS VERTICAL TO WINDOW JAMB, BY PANEL FABRICATOR</p> | <p>22. BUTYL TAPE 50mm MIN COVER ON EACH SIDE, BY OTHERS</p> <p>23. FOLDED METAL FLASHING TO SUIT, BY OTHERS</p> <p>24. CONTINUOUS FLASHING TAPE, 35mm MIN COVER ON THE FLASHING, BY PANEL FABRICATOR</p> <p>25. FLASHING TAPE DRESSED OVER, BY OTHERS</p> <p>26. FOLDED METAL FLASHING 60mm MIN COVER ON EACH SIDE, BY OTHERS</p> <p>27. SEALANT ON PEV ROD, BY PANEL FABRICATOR</p> |
|--|---|--|--|--|---|

SPS BUILDING

ROOFING & BUILDING PRODUCTS

SPS Roofing and Building Limited
220B Bush Road, Rosedale, Auckland, New Zealand,
T : +64 9 415 2669 | www.spsbuilding.co.nz

Sheet Title:

Soffit to Wall Junction
Equitone High Density Fibre Cement
T 50 Typical Details

Sheet Status:

Architectural Resource
For Information & Design

Sheet Number:

13

Revision:

A

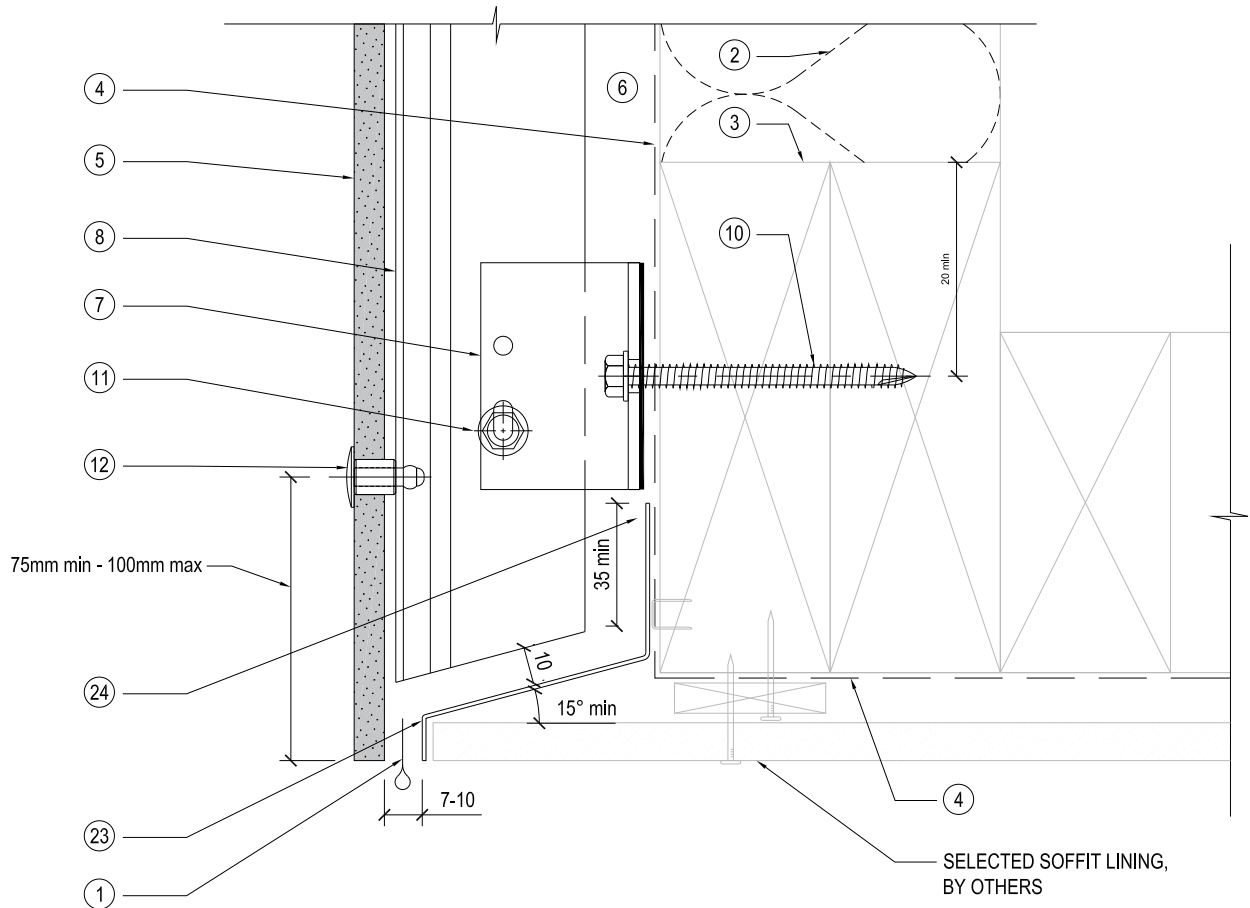
Revision Date

July 2019

Scale @ A4:

1:2

Equitone - T50 - Visible Rivet Fixed



NOTES / SPECIFICATION:

- | | | | | | |
|---|---|--|---|--|---|
| <p>1. DRAINAGE AND VENTILATION SLOT</p> <p>2. INSULATION IF REQUIRED, BY OTHERS</p> <p>3. FRAMING TO NZS3604, BY OTHERS</p> <p>4. AIR BARRIER (RIGID OR FLEXIBLE WALL UNDERLAY), BY OTHERS</p> <p>5. EQUITONE 3MM THICK FIBRE CEMENT PANEL, BY PANEL FABRICATOR</p> <p>6. DRAINED AND VENTILATED CAVITY</p> | <p>7. T50BR AL. MILL FINISH CLADDING SUPPORT BRACKET-OVER BUTYL PAD (MIN 2 PER RAIL, SPACED @ 800mm CRS MAX), BY PANEL FABRICATOR</p> <p>8. T50V/R AL. BLACK PC VERTICAL SUPPORT RAIL (SPACED @ 800mm CRS MAX), BY PANEL FABRICATOR</p> <p>9. T50R AL. MILL FINISH VERTICAL INTERMEDIATE SUPPORT RAIL (SPACED @ 800mm CRS MAX), BY PANEL FABRICATOR</p> | <p>10. S530(A2) HEX TEK T17 TIP SCREW 14g x 75 mm, BY PANEL FABRICATOR</p> <p>11. S530(A2) HEX TEK SDS TIP SCREW 14g x 25 mm, BY PANEL FABRICATOR</p> <p>12. PROPRIETARY S530(A2) 4.8 mm RIVET PC OR SS FINISH (MIN 2 PER SHEET, SPACED @ 800mm CRS MAX), BY PANEL FABRICATOR</p> <p>13. PROPRIETARY BLACK PVC FOAM TAPE 9x3mm, CONTINUOUS VERTICAL, BY PANEL FABRICATOR</p> | <p>14. CORNER CLIP PROFILE, FIXED WITH S530(A2) ST PAN 6g x 12mm (min 2 PER RAIL), BY PANEL FABRICATOR</p> <p>15. ALU/ALU, No. 4 CSK POP-RIVET (min 2 PER RAIL, SPACED @ 800mm CRS MAX), BY PANEL FABRICATOR</p> <p>16. 10mm NEGATIVE JOINT</p> <p>17. T50 HR HORIZONTAL FLASHING, BLACK PC FINISH, ADHESIVE FIXING TO TOP EDGE OF THE EQUITONE FIBRE CEMENT PANEL, BY PANEL FABRICATOR</p> | <p>18. STRUCTURAL TIMBER NOG TO NZS3604 PRIOR INSTALLATION, FIXED WITH MINIMUM 3 NAILS, BY OTHERS</p> <p>19. SCREW FIXING, BY PANEL FABRICATOR</p> <p>20. FIXING INTO TIMBER WITH S530(A2) HEX TEK T17 TIP SCREW 10g x 35 mm @ 400 CRS max, BY PANEL FABRICATOR</p> <p>21. T50JC AL. JAMB CLOSURE PROFILE PC LSG MATT BLACK, CONTINUOUS VERTICAL TO WINDOW JAMB, BY PANEL FABRICATOR</p> | <p>22. BUTYL TAPE 50mm MIN COVER ON EACH SIDE, BY OTHERS</p> <p>23. FOLDED METAL FLASHING TO SUIT, BY OTHERS</p> <p>24. CONTINUOUS FLASHING TAPE, 35mm MIN COVER ON THE FLASHING, BY PANEL FABRICATOR</p> <p>25. FLASHING TAPE DRESSED OVER, BY OTHERS</p> <p>26. FOLDED METAL FLASHING 60mm MIN COVER ON EACH SIDE, BY OTHERS</p> <p>27. SEALANT ON PEJ ROD, BY PANEL FABRICATOR</p> |
|---|---|--|---|--|---|

SPS BUILDING
ROOFING & BUILDING PRODUCTS

SPS Roofing and Building Limited
220B Bush Road, Rosedale, Auckland, New Zealand,
T : +64 9 415 2669 | www.spsbuilding.co.nz

Sheet Title:

Wall to Soffit Junction
Equitone High Density Fibre Cement
T 50 Typical Details

Sheet Status:

Architectural Resource
For Information & Design

Sheet Number:

14

Revision:

A

Revision Date

July 2019

Scale @ A4:

1:2

Equitone - T50 - Visible Rivet Fixed

VANLUK MG100-XX TO SUIT, WITH BUTYL TAPE, CUT 50mm MIN AROUND THE PENETRATING ELEMENT, BY OTHERS

5

3mm SS304(A2), SELECTED FINISH, CUT 40mm MIN AROUND THE PENETRATING ELEMENT, ON 1mm ADHESIVE TAPE, BY PANEL FABRICATOR

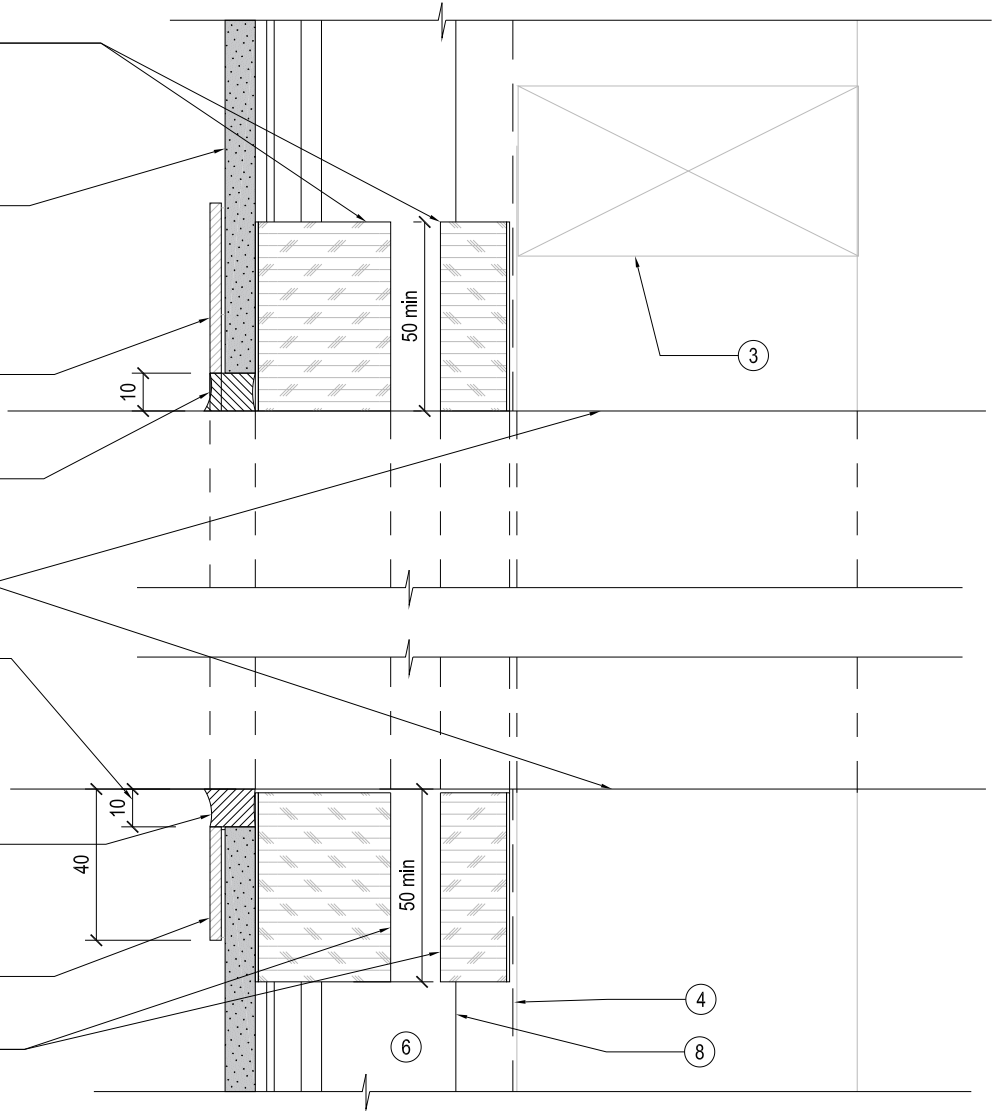
CONTINUOUS APPROVED SEALANT AROUND THE PENETRATION, ON MG100-XX TO SUIT AS A BOND BRAKER, BY PANEL FABRICATOR

PENETRATING ELEMENT, BY OTHERS

10mm SIDE AND BOTTOM CLEARANCE TO THE PENETRATING ELEMENT IN THE EQUITONE PANEL, BY PANEL FABRICATOR

CONTINUOUS APPROVED SEALANT AROUND THE PENETRATION, ON MG100-XX TO SUIT AS A BOND BRAKER, BY PANEL FABRICATOR

3mm SS304(A2), SELECTED FINISH, CUT 40mm MIN AROUND THE PENETRATING ELEMENT, ON 1mm ADHESIVE TAPE, BY PANEL FABRICATOR
VANLUK MG100-XX TO SUIT WITH BUTYL TAPE, BY OTHERS



NOTES / SPECIFICATION:

- | | | | | | |
|---|---|---|--|--|---|
| 1. DRAINAGE AND VENTILATION SLOT | 7. T50BR AL. MILL FINISH CLADDING SUPPORT BRACKET-COVER BUTYL PAD (MIN 2 PER RAIL, SPACED @ 800mm CRS MAX), BY PANEL FABRICATOR | 10. SS304(A2) HEX TEK T17 TIP SCREW 14g x 75 mm, BY PANEL FABRICATOR | 14. CORNER CLIP PROFILE, FIXED WITH SS304(A2) ST PAN 6g x 12mm (min 2 PER RAIL), BY PANEL FABRICATOR | 18. STRUCTURAL TIMBER NOG TO NZS3804 PRIOR INSTALLATION, FIXED WITH MINIMUM 3 NAILS, BY OTHERS | 22. BUTYL TAPE 50mm MIN COVER ON EACH SIDE, BY OTHERS |
| 2. INSULATION IF REQUIRED, BY OTHERS | 8. T50V/R AL. BLACK PC VERTICAL SUPPORT RAIL (SPACED @ 800mm CRS MAX), BY PANEL FABRICATOR | 11. SS304(A2) HEX TEK SDS TIP SCREW 14g x 25 mm, BY PANEL FABRICATOR | 15. ALU/ALU, No. 4 CSK POP-RIVET (min 2 PER RAIL, SPACED @ 800mm CRS MAX), BY PANEL FABRICATOR | 19. SCREW FIXING, BY PANEL FABRICATOR | 23. FOLDED METAL FLASHING TO SUIT, BY OTHERS |
| 3. FRAMING TO NZS3604, BY OTHERS | 9. T50R AL. MILL FINISH VERTICAL INTERMEDIATE SUPPORT RAIL (SPACED @ 800mm CRS MAX), BY PANEL FABRICATOR | 12. PROPRIETARY SS304(A2) 4.8 mm RIVET PC OR SS FINISH (MIN 2 PER SHEET, SPACED @ 800mm CRS MAX), BY PANEL FABRICATOR | 16. 10mm NEGATIVE JOINT | 20. FIXING INTO TIMBER WITH SS304(A2) HEX TEK T17 TIP SCREW 10g x 35 mm @ 400 CRS max, BY PANEL FABRICATOR | 24. CONTINUOUS FLASHING TAPE, 35mm MIN COVER ON THE FLASHING, BY PANEL FABRICATOR |
| 4. AIR BARRIER (RIGID OR FLEXIBLE WALL UNDERLAY), BY OTHERS | | 13. PROPRIETARY BLACK PVC FOAM TAPE 9x3mm, CONTINUOUS VERTICAL, BY PANEL FABRICATOR | 17. T50 HR HORIZONTAL FLASHING, BLACK PC FINISH, ADHESIVE FINING TO TOP EDGE OF THE EQUITONE FIBRE CEMENT PANEL, BY PANEL FABRICATOR | 21. TSJUC AL JAMB CLOSURE PROFILE PC LSG MATT BLACK, CONTINUOUS VERTICAL TO WINDOW JAMB, BY PANEL FABRICATOR | 25. FLASHING TAPE DRESSED OVER, BY OTHERS |
| 5. EQUITONE 3MM THICK FIBRE CEMENT PANEL, BY PANEL FABRICATOR | | | | | 26. FOLDED METAL FLASHING 60mm MIN COVER ON EACH SIDE, BY OTHERS |
| 6. DRAINED AND VENTILATED CAVITY | | | | | 27. SEALANT ON PEV ROD, BY PANEL FABRICATOR |

SPS BUILDING

ROOFING & BUILDING PRODUCTS

SPS Roofing and Building Limited
220B Bush Road, Rosedale, Auckland, New Zealand,
T: +64 9 415 2669 | www.spsbuilding.co.nz

Sheet Title:

Element Penetration
Equitone High Density Fibre Cement
T 50 Typical Details

Sheet Status:

Architectural Resource
For Information & Design

Sheet Number:

15

Revision:

A

Revision Date

July 2019

Scale @ A4:

1:2

Equitone - T50 - Visible Rivet Fixed

VANLUK MG100-XX TO SUIT, WITH BUTYL TAPE, CUT 50mm MIN AROUND THE PENETRATING ELEMENT, **BY OTHERS**

5

3mm SS304(A2), SELECTED FINISH, CUT 40mm MIN AROUND THE PENETRATING ELEMENT, ON 1mm ADHESIVE TAPE, **BY PANEL FABRICATOR**

CONTINUOUS APPROVED SEALANT AROUND THE PENETRATION, ON MG100-XX TO SUIT AS A BOND BRAKER, **BY PANEL FABRICATOR**

PENETRATING PIPE, APPROVED FIXINGS TO THE FRAME, **BY OTHERS**

10mm SIDE AND BOTTOM CLEARANCE TO THE PENETRATING ELEMENT IN THE EQUITONE PANEL, **BY PANEL FABRICATOR**

CONTINUOUS APPROVED SEALANT AROUND THE PENETRATION, ON MG100-XX TO SUIT AS A BOND BRAKER, **BY PANEL FABRICATOR**

3mm SS304(A2), SELECTED FINISH, CUT 40mm MIN AROUND THE PENETRATING ELEMENT, ON 1mm ADHESIVE TAPE, **BY PANEL FABRICATOR**
 VANLUK MG100-XX TO SUIT WITH BUTYL TAPE, **BY OTHERS**

5

FLASHING TAPE AROUND THE SLEEVE SUPPLIED WITH THE SLEEVE, **BY OTHERS**

50 min

3

SELECTED ELASTIC EPDM SLEEVE FITTED WITH A SELF ADHESIVE FLANGE, **BY OTHERS**

FLASHING TAPE AROUND THE SLEEVE SUPPLIED WITH THE SLEEVE, **BY OTHERS**

4

8

NOTES / SPECIFICATION:

- | | | | | | |
|---|--|---|--|---|---|
| 1. DRAINAGE AND VENTILATION SLOT | 7. T50BR AL. MILL FINISH CLADDING SUPPORT BRACKET-OVER BUTYL PAD (MIN 2 PER RAIL, SPACED @ 800mm CRS MAX), BY PANEL FABRICATOR | 10. SS304(A2) HEX TEK T17 TIP SCREW 14g x 75 mm, BY PANEL FABRICATOR | 14. CORNER CLIP PROFILE, FIXED WITH SS304(A2) ST PAN 6g x 12mm (min 2 PER RAIL), BY PANEL FABRICATOR | 18. STRUCTURAL TIMBER NOG TO NZS3604 PRIOR INSTALLATION, FIXED WITH MINIMUM 3 NAILS, BY OTHERS | 22. BUTYL TAPE 50mm MIN COVER ON EACH SIDE, BY OTHERS |
| 2. INSULATION IF REQUIRED, BY OTHERS | 8. T50V/R AL. BLACK PVC VERTICAL SUPPORT RAIL (SPACED @ 800mm CRS MAX), BY PANEL FABRICATOR | 11. SS304(A2) HEX TEK SDS TIP SCREW 14g x 25 mm, BY PANEL FABRICATOR | 15. ALU/ALU, No. 4 CSK POP-RIVET (min 2 PER RAIL, SPACED @ 800mm CRS MAX), BY PANEL FABRICATOR | 19. SCREW FIXING, BY PANEL FABRICATOR | 23. FOLDED METAL FLASHING TO SUIT, BY OTHERS |
| 3. FRAMING TO NZS3604, BY OTHERS | 9. T50R AL. MILL FINISH VERTICAL INTERMEDIATE SUPPORT RAIL (SPACED @ 800mm CRS MAX), BY PANEL FABRICATOR | 12. PROPRIETARY SS304(A2) 4.8 mm RIVET PC OR SS FINISH (MIN 2 PER SHEET, SPACED @ 800mm CRS MAX), BY PANEL FABRICATOR | 16. 10mm NEGATIVE JOINT | 20. FIXING INTO TIMBER WITH SS304(A2) HEX TEK T17 TIP SCREW 10g x 35 mm @ 400 CRS max, BY PANEL FABRICATOR | 24. CONTINUOUS FLASHING TAPE, 35mm MIN COVER ON THE FLASHING, BY PANEL FABRICATOR |
| 4. AIR BARRIER (RIGID OR FLEXIBLE WALL UNDERLAY), BY OTHERS | | 13. PROPRIETARY BLACK PVC FOAM TAPE 9x3mm, CONTINUOUS VERTICAL, BY PANEL FABRICATOR | 17. T50 HR HORIZONTAL FLASHING, BLACK PC FINISH, ADHESIVE FIXING TO TOP EDGE OF THE EQUITONE FIBRE CEMENT PANEL, BY PANEL FABRICATOR | 21. TSJUC AL. JAMB CLOSURE PROFILE PC LSG MATT BLACK, CONTINUOUS VERTICAL TO WINDOW JAMB, BY PANEL FABRICATOR | 25. FLASHING TAPE DRESSED OVER, BY OTHERS |
| 5. EQUITONE 3MM THICK FIBRE CEMENT PANEL, BY PANEL FABRICATOR | | | | | 26. FOLDED METAL FLASHING 60mm MIN COVER ON EACH SIDE, BY OTHERS |
| 6. DRAINED AND VENTILATED CAVITY | | | | | 27. SEALANT ON PEJ ROD, BY PANEL FABRICATOR |

SPS BUILDING

ROOFING & BUILDING PRODUCTS

SPS Roofing and Building Limited
 220B Bush Road, Rosedale, Auckland, New Zealand,
 T: +64 9 415 2669 | www.spsbuilding.co.nz

Sheet Title:

Pipe Penetration
 Equitone High Density Fibre Cement
 T 50 Typical Details

Sheet Status:

Architectural Resource
 For Information & Design

Sheet Number:

16

Revision:

A

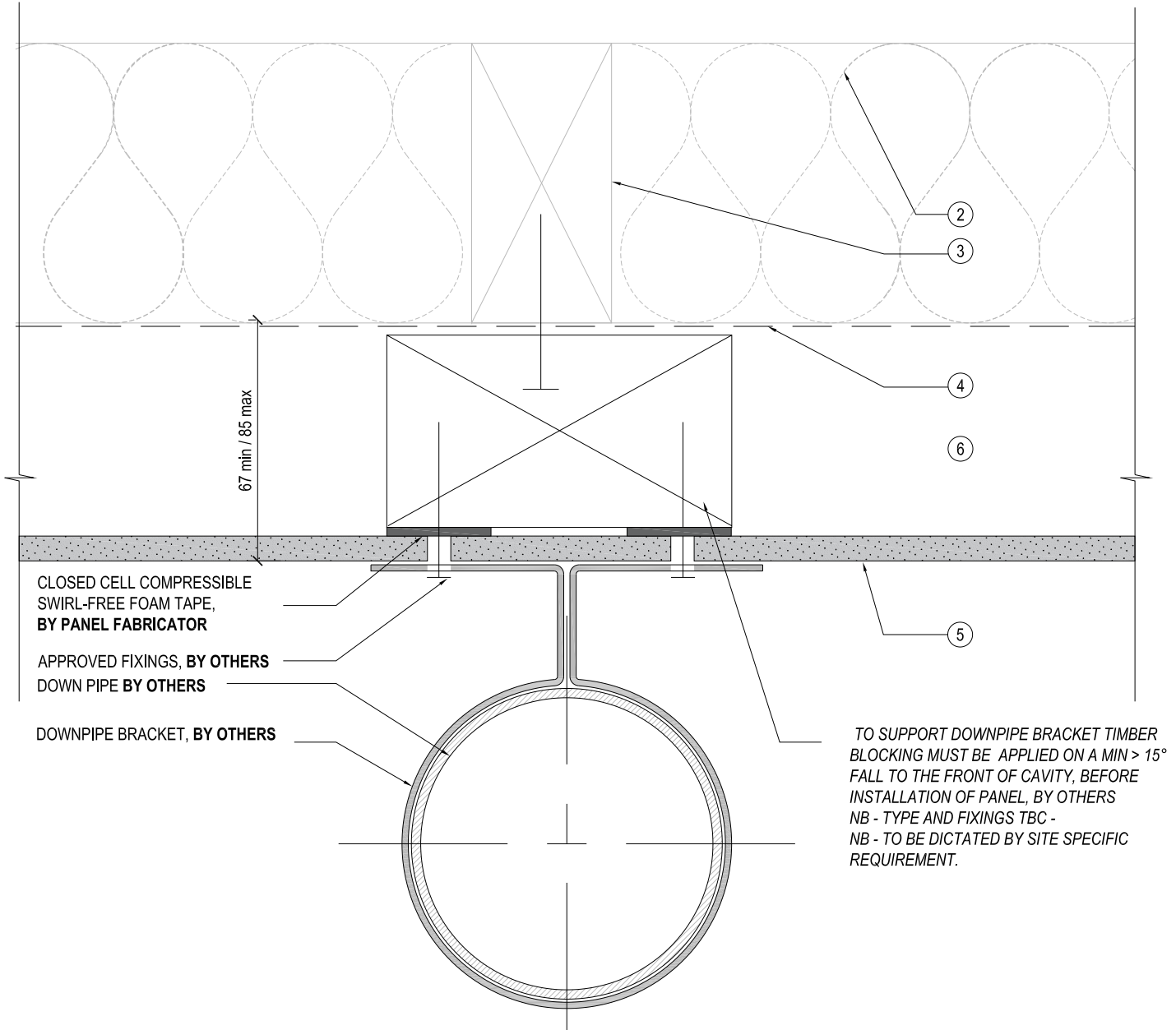
Revision Date:

July 2019

Scale @ A4:

1:2

Equitone - T50 - Visible Rivet Fixed



NOTES / SPECIFICATION:

- | | | | | | |
|---|---|--|---|---|---|
| <p>1. DRAINAGE AND VENTILATION SLOT</p> <p>2. INSULATION IF REQUIRED, BY OTHERS</p> <p>3. FRAMING TO NZS3604, BY OTHERS</p> <p>4. AIR BARRIER (RIGID OR FLEXIBLE WALL UNDERLAY), BY OTHERS</p> <p>5. EQUITONE 3MM THICK FIBRE CEMENT PANEL, BY PANEL FABRICATOR</p> <p>6. DRAINED AND VENTILATED CAVITY</p> | <p>7. T50BR AL. MILL FINISH CLADDING SUPPORT BRACKET-OVER BUTYL PAD (MIN 2 PER RAIL, SPACED @ 800mm CRS MAX), BY PANEL FABRICATOR</p> <p>8. T50V/R AL. BLACK PC VERTICAL SUPPORT RAIL (SPACED @ 800mm CRS MAX), BY PANEL FABRICATOR</p> <p>9. T50R AL. MILL FINISH VERTICAL INTERMEDIATE SUPPORT RAIL (SPACED @ 800mm CRS MAX), BY PANEL FABRICATOR</p> | <p>10. S530(A2) HEX TEK T17 TIP SCREW 14g x 75 mm, BY PANEL FABRICATOR</p> <p>11. S530(A2) HEX TEK SDS TIP SCREW 14g x 25 mm, BY PANEL FABRICATOR</p> <p>12. PROPRIETARY S530(A2) 4.8 mm RIVET PC OR SS FINISH (MIN 2 PER SHEET, SPACED @ 800mm CRS MAX), BY PANEL FABRICATOR</p> <p>13. PROPRIETARY BLACK PVC FOAM TAPE 9x3mm, CONTINUOUS VERTICAL, BY PANEL FABRICATOR</p> | <p>14. CORNER CLIP PROFILE, FIXED WITH S530(A2) ST PAN 6g x 12mm (min 2 PER RAIL), BY PANEL FABRICATOR</p> <p>15. ALU/ALU, No. 4 CSK POP-RIVET (min 2 PER RAIL, SPACED @ 800mm CRS MAX), BY PANEL FABRICATOR</p> <p>16. 10mm NEGATIVE JOINT</p> <p>17. T50 HR HORIZONTAL FLASHING, BLACK PC FINISH, ADHESIVE FIXING TO TOP EDGE OF THE EQUITONE FIBRE CEMENT PANEL, BY PANEL FABRICATOR</p> | <p>18. STRUCTURAL TIMBER NOG TO NZS3604 PRIOR INSTALLATION, FIXED WITH MINIMUM 3 NAILS, BY OTHERS</p> <p>19. SCREW FIXING, BY PANEL FABRICATOR</p> <p>20. FIXING INTO TIMBER WITH S530(A2) HEX TEK T17 TIP SCREW 10g x 35 mm @ 400 CRS max, BY PANEL FABRICATOR</p> <p>21. T50J AL. JAMB CLOSURE PROFILE PC LSG MATT BLACK, CONTINUOUS VERTICAL TO WINDOW JAMB, BY PANEL FABRICATOR</p> | <p>22. BUTYL TAPE 50mm MIN COVER ON EACH SIDE, BY OTHERS</p> <p>23. FOLDED METAL FLASHING TO SUIT, BY OTHERS</p> <p>24. CONTINUOUS FLASHING TAPE, 35mm MIN COVER ON THE FLASHING, BY PANEL FABRICATOR</p> <p>25. FLASHING TAPE DRESSED OVER, BY OTHERS</p> <p>26. FOLDED METAL FLASHING 60mm MIN COVER ON EACH SIDE, BY OTHERS</p> <p>27. SEALANT ON PEJ ROD, BY PANEL FABRICATOR</p> |
|---|---|--|---|---|---|

SPS BUILDING

ROOFING & BUILDING PRODUCTS

SPS Roofing and Building Limited
220B Bush Road, Rosedale, Auckland, New Zealand,
T : +64 9 415 2669 | www.spsbuilding.co.nz

Sheet Title:

Downpipe Bracket Support
Equitone High Density Fibre Cement
T 50 Typical Details

Sheet Status:

Architectural Resource
For Information & Design

Sheet Number:

17

Revision:

A

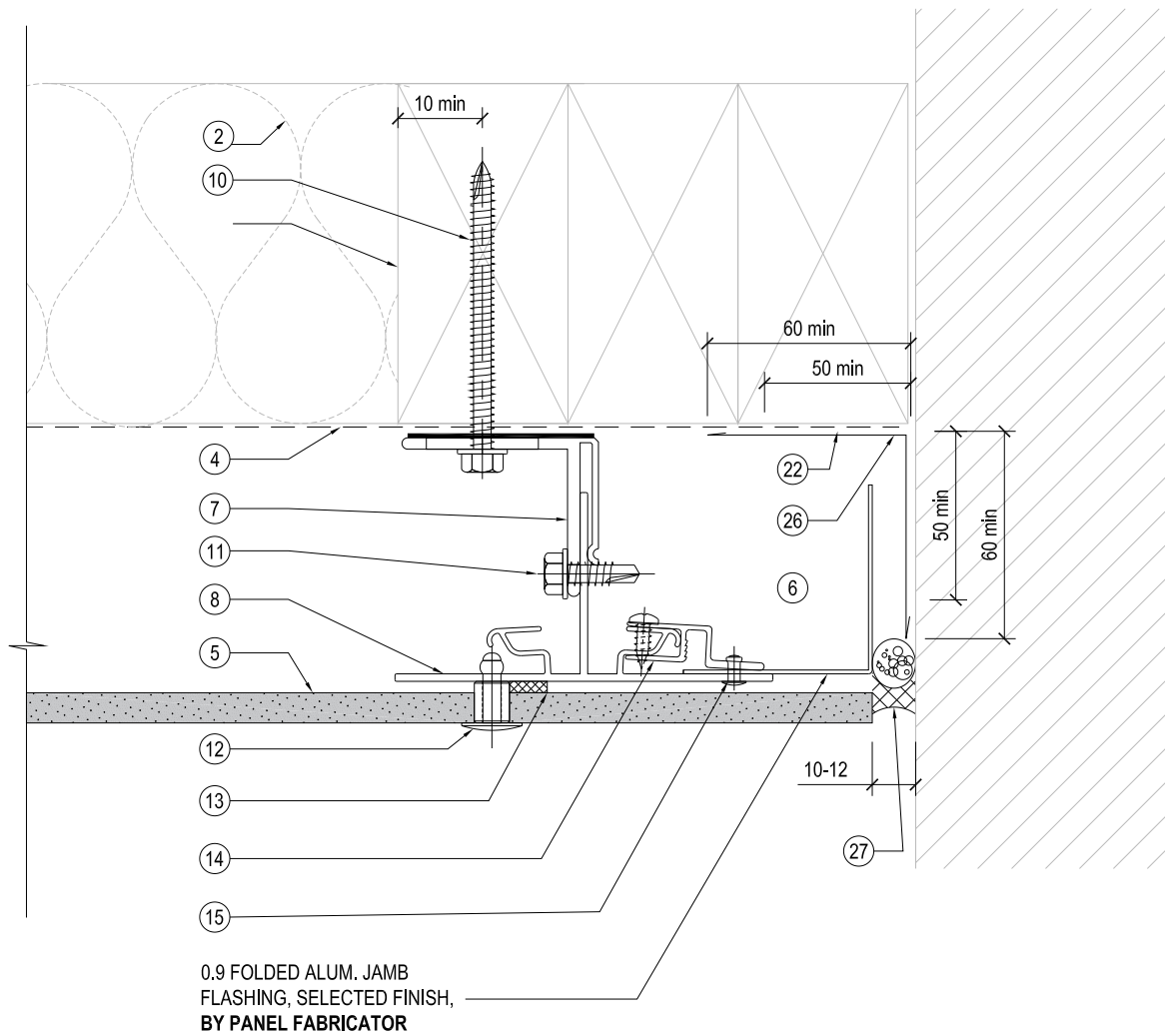
Revision Date

July 2019

Scale @ A4:

1:2

Equitone - T50 - Visible Rivet Fixed



NOTES / SPECIFICATION:

1. DRAINAGE AND VENTILATION SLOT
2. INSULATION IF REQUIRED, BY OTHERS
3. FRAMING TO NZS3604, BY OTHERS
4. AIR BARRIER (RIGID OR FLEXIBLE WALL UNDERLAY), BY OTHERS
5. EQUITONE 3MM THICK FIBRE CEMENT PANEL, BY PANEL FABRICATOR
6. DRAINED AND VENTILATED CAVITY
7. T50BR AL. MILL FINISH CLADDING SUPPORT BRACKET-OVER BUTYL PAD (MIN 2 PER RAIL, SPACED @ 800mm CRS MAX), BY PANEL FABRICATOR
8. T50V/R AL. BLACK PC VERTICAL SUPPORT RAIL (SPACED @ 800mm CRS MAX), BY PANEL FABRICATOR
9. T50R AL. MILL FINISH VERTICAL INTERMEDIATE SUPPORT RAIL (SPACED @ 800mm CRS MAX), BY PANEL FABRICATOR
10. S530(A2) HEX TEK T17 TIP SCREW 14g x 75 mm, BY PANEL FABRICATOR
11. S530(A2) HEX TEK SDS TIP SCREW 14g x 25 mm, BY PANEL FABRICATOR
12. PROPRIETARY S530(A2) 4.8 mm RIVET PC OR SS FINISH (MIN 2 PER SHEET, SPACED @ 800mm CRS MAX), BY PANEL FABRICATOR
13. PROPRIETARY BLACK PVC FOAM TAPE 9x3mm, CONTINUOUS VERTICAL, BY PANEL FABRICATOR
14. CORNER CLIP PROFILE, FIXED WITH S530(A2) ST PAN 6g x 12mm (min 2 PER RAIL), BY PANEL FABRICATOR
15. ALU/ALU, No. 4 CSK POP-RIVET (min 2 PER RAIL, SPACED @ 800mm CRS MAX), BY PANEL FABRICATOR
16. 10mm NEGATIVE JOINT
17. T50 HR HORIZONTAL FLASHING, BLACK PC FINISH, ADHESIVE FIXING TO TOP EDGE OF THE EQUITONE FIBRE CEMENT PANEL, BY PANEL FABRICATOR
18. STRUCTURAL TIMBER NOG TO NZS3604 PRIOR INSTALLATION, FIXED WITH MINIMUM 3 NAILS, BY OTHERS
19. SCREW FIXING, BY PANEL FABRICATOR
20. FIXING INTO TIMBER WITH S530(A2) HEX TEK T17 TIP SCREW 10g x 35 mm @ 400 CRS max, BY PANEL FABRICATOR
21. T50JC AL. JAMB CLOSURE PROFILE PC LSG MATT BLACK, CONTINUOUS VERTICAL TO WINDOW JAMB, BY PANEL FABRICATOR
22. BUTYL TAPE 50mm MIN COVER ON EACH SIDE, BY OTHERS
23. FOLDED METAL FLASHING TO SUIT, BY OTHERS
24. CONTINUOUS FLASHING TAPE, 35mm MIN COVER ON THE FLASHING, BY PANEL FABRICATOR
25. FLASHING TAPE DRESSED OVER, BY OTHERS
26. FOLDED METAL FLASHING 60mm MIN COVER ON EACH SIDE, BY OTHERS
27. SEALANT ON PEV ROD, BY PANEL FABRICATOR

SPS BUILDING

ROOFING & BUILDING PRODUCTS

SPS Roofing and Building Limited
220B Bush Road, Rosedale, Auckland, New Zealand,
T: +64 9 415 2669 | www.spsbuilding.co.nz

Sheet Title:

Vertical Termination @ PC Wall
Equitone High Density Fibre Cement
T 50 Typical Details

Sheet Status:

Architectural Resource
For Information & Design

Sheet Number:

18

Revision:

A

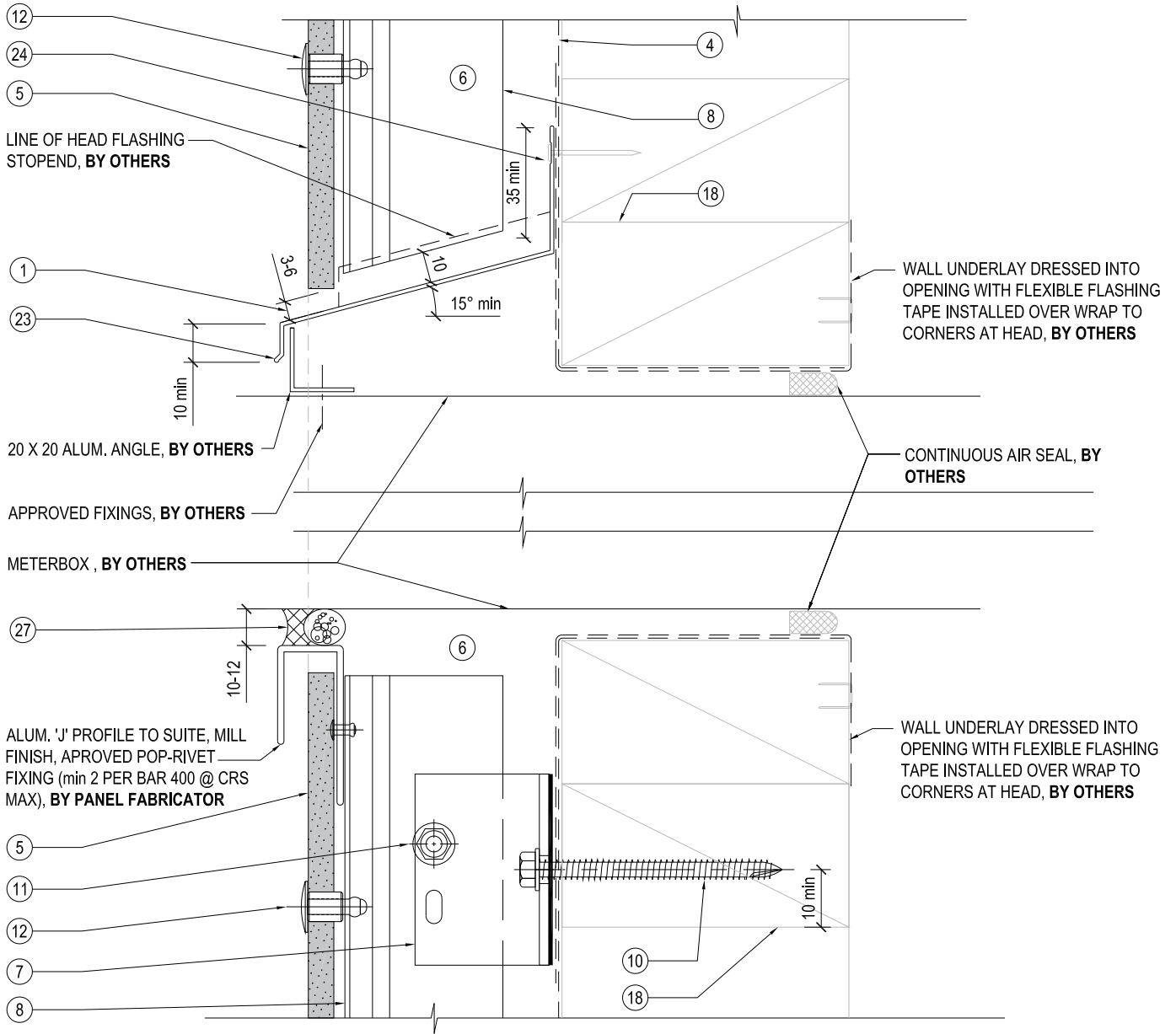
Revision Date

July 2019

Scale @ A4:

1:2

Equitone - T50 - Visible Rivet Fixed



NOTES / SPECIFICATION:

- | | | | | | |
|---|--|---|---|---|---|
| <p>1. DRAINAGE AND VENTILATION SLOT</p> <p>2. INSULATION IF REQUIRED, BY OTHERS</p> <p>3. FRAMING TO NZS3604, BY OTHERS</p> <p>4. AIR BARRIER (RIGID OR FLEXIBLE WALL UNDERLAY), BY OTHERS</p> <p>5. EQUITONE 6MM THICK FIBRE CEMENT PANEL, BY PANEL FABRICATOR</p> <p>6. DRAINED AND VENTILATED CAVITY</p> | <p>7. T50BR AL. MILL FINISH CLADDING SUPPORT BRACKET-COVER BUTYL PAD (MIN 2 PER RAIL, SPACED @ 800mm CRS MAX), BY PANEL FABRICATOR</p> <p>8. T50V/R AL. BLACK PC VERTICAL SUPPORT RAIL (SPACED @ 800mm CRS MAX), BY PANEL FABRICATOR</p> <p>9. T50R AL. MILL FINISH VERTICAL INTERMEDIATE SUPPORT RAIL (SPACED @ 800mm CRS MAX), BY PANEL FABRICATOR</p> | <p>10. S5304(A2) HEX TEK T17 TIP SCREW 14g x 75 mm, BY PANEL FABRICATOR</p> <p>11. S5304(A2) HEX TEK SDS TIP SCREW 14g x 25 mm, BY PANEL FABRICATOR</p> <p>12. PROPRIETARY S5304(A2) 4.8 mm RIVET PC OR SS FINISH (MIN 2 PER SHEET, SPACED @ 800mm CRS MAX), BY PANEL FABRICATOR</p> <p>13. PROPRIETARY BLACK PVC FOAM TAPE 9x3mm, CONTINUOUS VERTICAL, BY PANEL FABRICATOR</p> | <p>14. CORNER CLIP PROFILE, FIXED WITH S5304(A2) ST PAN 6g x 12mm (min 2 PER RAIL), BY PANEL FABRICATOR</p> <p>15. ALU./ALU. No. 4 CSK POP-RIVET (min 2 PER RAIL, SPACED @ 800mm CRS MAX), BY PANEL FABRICATOR</p> <p>16. 10mm NEGATIVE JOINT</p> <p>17. T50 HR HORIZONTAL FLASHING, BLACK PC FINISH, ADHESIVE FIXING TO TOP EDGE OF THE EQUITONE FIBRE CEMENT PANEL, BY PANEL FABRICATOR</p> | <p>18. STRUCTURAL TIMBER NOG TO NZS3604 PRIOR INSTALLATION, FIXED WITH MINIMUM 3 NAILS, BY OTHERS</p> <p>19. SCREW FIXING, BY PANEL FABRICATOR</p> <p>20. FIXING INTO TIMBER WITH S5304(A2) HEX TEK T17 TIP SCREW 10g x 35 mm @ 400 CRS max, BY PANEL FABRICATOR</p> <p>21. T50JL AL. JAMB CLOSURE PROFILE PC LSG MATT BLACK, CONTINUOUS VERTICAL TO WINDOW JAMB, BY PANEL FABRICATOR</p> | <p>22. BUTYL TAPE 50mm MIN COVER ON EACH SIDE, BY OTHERS</p> <p>23. FOLDED METAL FLASHING TO SUIT, BY OTHERS</p> <p>24. CONTINUOUS FLASHING TAPE, 35mm MIN COVER ON THE FLASHING, BY PANEL FABRICATOR</p> <p>25. FLASHING TAPE DRESSED OVER, BY OTHERS</p> <p>26. FOLDED METAL FLASHING 60mm MIN COVER ON EACH SIDE, BY OTHERS</p> <p>27. SEALANT ON PEJ ROD, BY PANEL FABRICATOR</p> |
|---|--|---|---|---|---|

SPS BUILDING

ROOFING & BUILDING PRODUCTS

SPS Roofing and Building Limited
220B Bush Road, Rosedale, Auckland, New Zealand,
T: +64 9 415 2669 | www.spsbuilding.co.nz

Sheet Title:

Meter Box Head & Sill
Equitone High Density Fibre Cement
T 50 Typical Details

Sheet Status:

Architectural Resource
For Information & Design

Sheet Number:

19

Revision:

A

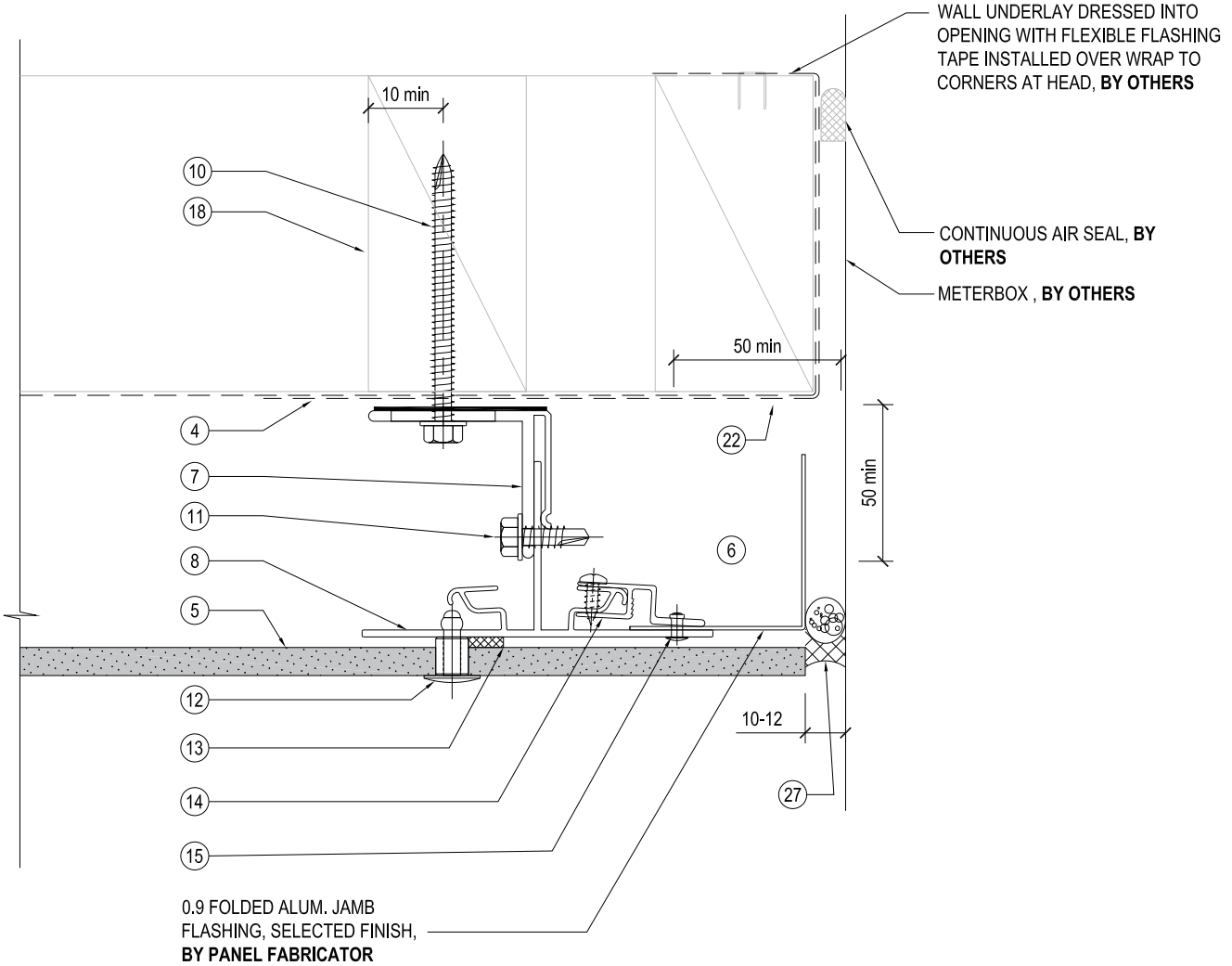
Revision Date

July 2019

Scale @ A4:

1:2

Equitone - T50 - Visible Rivet Fixed



NOTES / SPECIFICATION:

- | | | | | | |
|---|--|--|---|--|---|
| <p>1. DRAINAGE AND VENTILATION SLOT</p> <p>2. INSULATION IF REQUIRED, BY OTHERS</p> <p>3. FRAMING TO NZS3604, BY OTHERS</p> <p>4. AIR BARRIER (RIGID OR FLEXIBLE WALL UNDERLAY), BY OTHERS</p> <p>5. EQUITONE 3MM THICK FIBRE CEMENT PANEL, BY PANEL FABRICATOR</p> <p>6. DRAINED AND VENTILATED CAVITY</p> | <p>7. T50BR AL. MILL FINISH CLADDING SUPPORT BRACKET-COVER BUTYL PAD (MIN 2 PER RAIL, SPACED @ 800mm CRS MAX), BY PANEL FABRICATOR</p> <p>8. T50V/R AL. BLACK PC VERTICAL SUPPORT RAIL (SPACED @ 800mm CRS MAX), BY PANEL FABRICATOR</p> <p>9. T50R AL. MILL FINISH VERTICAL INTERMEDIATE SUPPORT RAIL (SPACED @ 800mm CRS MAX), BY PANEL FABRICATOR</p> | <p>10. S530(A2) HEX TEK T17 TIP SCREW 14g x 75 mm, BY PANEL FABRICATOR</p> <p>11. S530(A2) HEX TEK SDS TIP SCREW 14g x 25 mm, BY PANEL FABRICATOR</p> <p>12. PROPRIETARY S530(A2) 4.8 mm RIVET PC OR SS FINISH (MIN 2 PER SHEET, SPACED @ 800mm CRS MAX), BY PANEL FABRICATOR</p> <p>13. PROPRIETARY BLACK PVC FOAM TAPE 9x3mm, CONTINUOUS VERTICAL, BY PANEL FABRICATOR</p> | <p>14. CORNER CLIP PROFILE, FIXED WITH S530(A2) ST PAN 6g x 12mm (min 2 PER RAIL), BY PANEL FABRICATOR</p> <p>15. ALU/ALU, No. 4 CSK POP-RIVET (min 2 PER RAIL, SPACED @ 800mm CRS MAX), BY PANEL FABRICATOR</p> <p>16. 10mm NEGATIVE JOINT</p> <p>17. T50 HR HORIZONTAL FLASHING, BLACK PC FINISH, ADHESIVE FINING TO TOP EDGE OF THE EQUITONE FIBRE CEMENT PANEL, BY PANEL FABRICATOR</p> | <p>18. STRUCTURAL TIMBER NOG TO NZS3604 PRIOR INSTALLATION, FIXED WITH MINIMUM 3 NAILS, BY OTHERS</p> <p>19. SCREW FIXING, BY PANEL FABRICATOR</p> <p>20. FIXING INTO TIMBER WITH S530(A2) HEX TEK T17 TIP SCREW 10g x 35 mm @ 400 CRS max, BY PANEL FABRICATOR</p> <p>21. T50JC AL. JAMB CLOSURE PROFILE PC LSG MATT BLACK, CONTINUOUS VERTICAL TO WINDOW JAMB, BY PANEL FABRICATOR</p> | <p>22. BUTYL TAPE 50mm MIN COVER ON EACH SIDE, BY OTHERS</p> <p>23. FOLDED METAL FLASHING TO SUIT, BY OTHERS</p> <p>24. CONTINUOUS FLASHING TAPE, 35mm MIN COVER ON THE FLASHING, BY PANEL FABRICATOR</p> <p>25. FLASHING TAPE DRESSED OVER, BY OTHERS</p> <p>26. FOLDED METAL FLASHING 60mm MIN COVER ON EACH SIDE, BY OTHERS</p> <p>27. SEALANT ON PEJ ROD, BY PANEL FABRICATOR</p> |
|---|--|--|---|--|---|

SPS BUILDING

ROOFING & BUILDING PRODUCTS

SPS Roofing and Building Limited
220B Bush Road, Rosedale, Auckland, New Zealand,
T: +64 9 415 2669 | www.spsbuilding.co.nz

Sheet Title:

Meter Box Jamb
Equitone High Density Fibre Cement
T 50 Typical Details

Sheet Status:

Architectural Resource
For Information & Design

Sheet Number:

20

Revision:

A

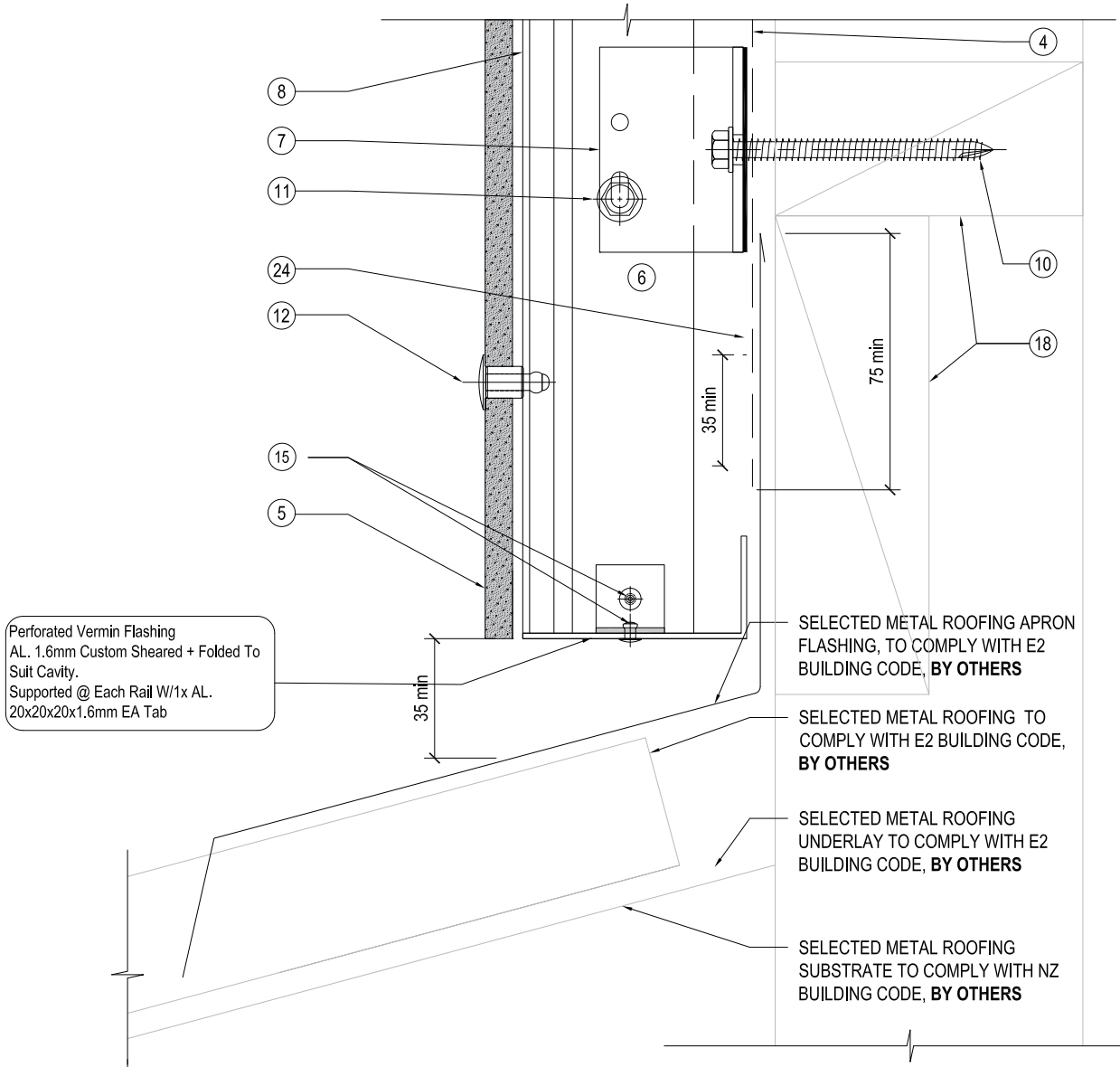
Revision Date

July 2019

Scale @ A4:

1:2

Equitone - T50 - Visible Rivet Fixed



Perforated Vermin Flashing
AL. 1.6mm Custom Sheared + Folded To Suit Cavity.
Supported @ Each Rail W/1x AL.
20x20x20x1.6mm EA Tab

SELECTED METAL ROOFING APRON FLASHING, TO COMPLY WITH E2 BUILDING CODE, BY OTHERS

SELECTED METAL ROOFING TO COMPLY WITH E2 BUILDING CODE, BY OTHERS

SELECTED METAL ROOFING UNDERLAY TO COMPLY WITH E2 BUILDING CODE, BY OTHERS

SELECTED METAL ROOFING SUBSTRATE TO COMPLY WITH NZ BUILDING CODE, BY OTHERS

NOTES / SPECIFICATION:							
1. DRAINAGE AND VENTILATION SLOT	7. T50BR AL. MILL FINISH CLADDING SUPPORT BRACKET-OVER BUTYL PAD (MIN 2 PER RAIL, SPACED @ 800mm CRS MAX), BY PANEL FABRICATOR	10. SS304(A2) HEX TEK T17 TIP SCREW 14g x 75 mm, BY PANEL FABRICATOR	13. PROPRIETARY BLACK PVC FOAM TAPE 9x3mm, CONTINUOUS VERTICAL, BY PANEL FABRICATOR	16. 10mm NEGATIVE JOINT	19. SCREW FIXING, BY PANEL FABRICATOR	22. BUTYL TAPE 50mm MIN COVER ON EACH SIDE, BY OTHERS	25. FLASHING TAPE DRESSED OVER, BY OTHERS
2. INSULATION IF REQUIRED, BY OTHERS	8. T50V/R AL. BLACK PC VERTICAL SUPPORT RAIL (SPACED @ 800mm CRS MAX), BY PANEL FABRICATOR	11. SS304(A2) HEX TEK SDS TIP SCREW 14g x 25 mm, BY PANEL FABRICATOR	14. CORNER CLIP PROFILE, FIXED WITH SS304(A2) ST PAN 6g x 12mm (min 2 PER RAIL), BY PANEL FABRICATOR	17. T50 HR HORIZONTAL FLASHING, BLACK PC FINISH, ADHESIVE FIXING TO TOP EDGE OF THE EQUITONE FIBRE CEMENT PANEL, BY PANEL FABRICATOR	20. FIXING INTO TIMBER WITH SS304(A2) HEX TEK T17 TIP SCREW 10g x 35 mm @ 400 CRS max, BY PANEL FABRICATOR	23. FOLDED METAL FLASHING TO SUIT, BY OTHERS	27. SEALANT ON PEV ROD, BY PANEL FABRICATOR
3. FRAMING TO NZS3604, BY OTHERS	9. T50R AL. MILL FINISH VERTICAL INTERMEDIATE SUPPORT RAIL (SPACED @ 800mm CRS MAX), BY PANEL FABRICATOR	12. PROPRIETARY SS304(A2) 4.8 mm RIVET PC OR SS FINISH (MIN 2 PER SHEET, SPACED @ 800mm CRS MAX), BY PANEL FABRICATOR	15. ALU/ALU, No. 4 CSK POP-RIVET (min 2 PER RAIL, SPACED @ 800mm CRS MAX), BY PANEL FABRICATOR	18. STRUCTURAL TIMBER NOG TO NZS3604 PRIOR INSTALLATION, FIXED WITH MINIMUM 3 NAILS, BY OTHERS	21. TSJUC-AL JAMB CLOSURE PROFILE PC LSG MATT BLACK, CONTINUOUS VERTICAL TO WINDOW JAMB, BY PANEL FABRICATOR	24. CONTINUOUS FLASHING TAPE, 35mm MIN COVER ON THE FLASHING, BY PANEL FABRICATOR	
4. AIR BARRIER (RIGID OR FLEXIBLE WALL UNDERLAY), BY OTHERS						26. FOLDED METAL FLASHING 60mm MIN COVER ON EACH SIDE, BY OTHERS	
5. EQUITONE 3MM THICK FIBRE CEMENT PANEL, BY PANEL FABRICATOR							
6. DRAINED AND VENTILATED CAVITY							

SPS BUILDING
ROOFING & BUILDING PRODUCTS

SPS Roofing and Building Limited
220B Bush Road, Rosedale, Auckland, New Zealand,
T : +64 9 415 2669 | www.spsbuilding.co.nz

Sheet Title:
Cladding Base Above Roof
Equitone High Density Fibre Cement
T 50 Typical Details

Sheet Status:
Architectural Resource
For Information & Design

Sheet Number: 21
Revision: A
Revision Date: July 2019
Scale @ A4: 1:2